

Installation Procedure

Tyros OS Upgrade 1.40 via USB

System Requirements

USB Connector

Windows 98/98SE/98Me/2000/XP

CPU: 166 MHz or more; Intel Pentium/Celeron processor

RAM: 128 MB or more

To start: Make sure that Yamaha USB-MIDI driver Version 1.61 has been installed to the computer. Go to the "Sounds > Hardware" properties in your control settings and look for "YAMAHA USB MIDI Driver" (see image below). You do not need to check it if the computer is connected to Tyros via the USB cable and they are communicating to each other successfully.



1. Double click "Tyros 140.exe" file to unpack the following two files.

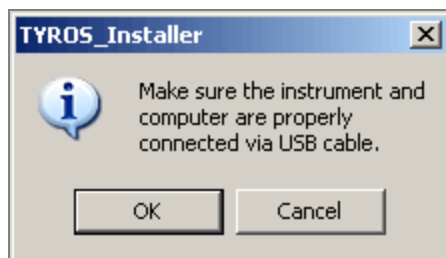
File Name	File Size
TYROS_Installer_Ver140.exe	176KB
TYROS.UXS	16MB

2. Click on the TYROS_Installer_Ver140.exe file icon.

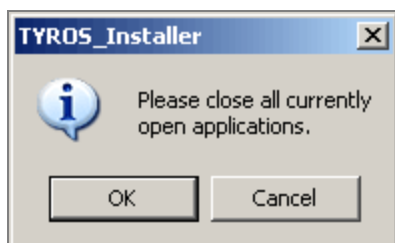


3. The Tyros Installer starts up and displays in the guidance dialogs shown below. Follow each instruction, and click OK to proceed. If Tyros is accidentally turned off during installation, please see the [Troubleshooting](#).

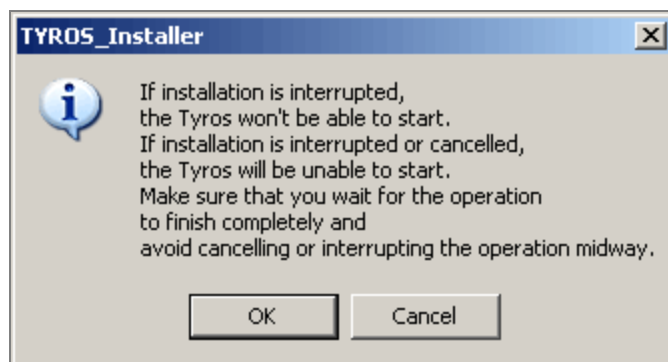
First dialog



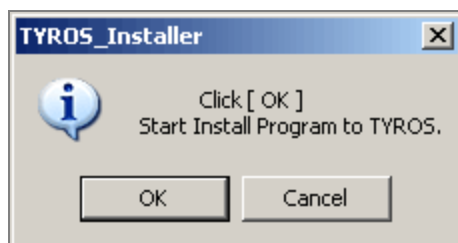
Second dialog



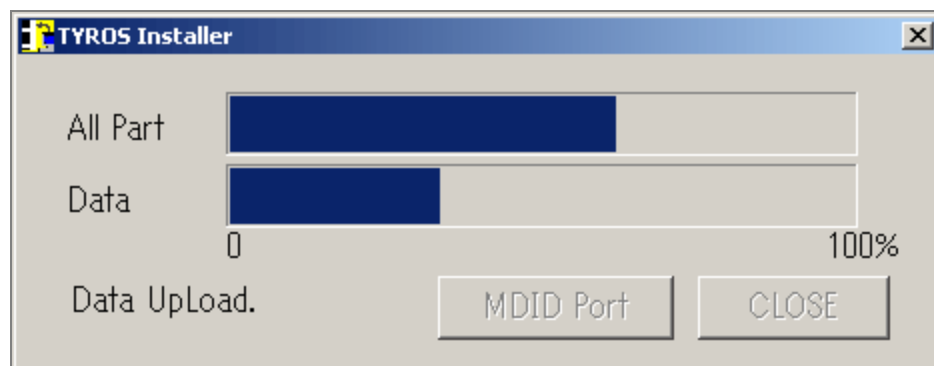
Third dialog



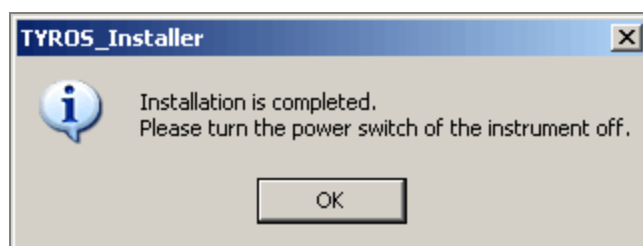
4. When you see the forth dialog shown below, click OK to start the actual installation. If you get the different dialog, please see the Troubleshooting.



5. The Tyros Installer begins the installation, and shows progress bars that indicate the progress.



6. When installation is completed, the following dialog appears.



7. To check that the version has been updated, proceed as follows:
 - a. Switch Tyros power back on
 - b. Select FUNCTION -> UTILITY -> OWNER to open the OWNER window
 - c. Hold down the OWNER NAME button for 5 seconds, until the new version information appears
 - d. Confirm the version number is the one which you installed



Troubleshooting

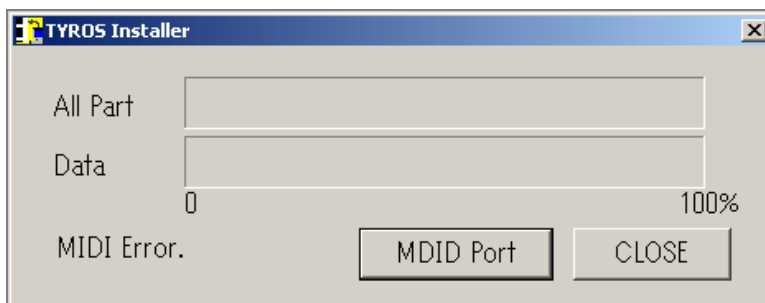
Note

If Tyros is accidentally turned off during installation, press the [POWER] switch of Tyros again while holding the STYLE CONTROL [START/STOP] button so that "Program install mode" appears on the LCD, and follow the installation procedure explained here again.

When you click OK at the fourth dialog in the above installation procedure document, Tyros Installer checks your MIDI port. If the check fails, the Installer displays the following dialog.



When you click OK to close this dialog, Tyros Installer enters standby and waits for you to change the MIDI Port setting. Tyros Installer dialog remains stopped on the screen, as follows.



The first thing to do in this case is to check that the Yamaha USB MIDI driver is present in your computer:

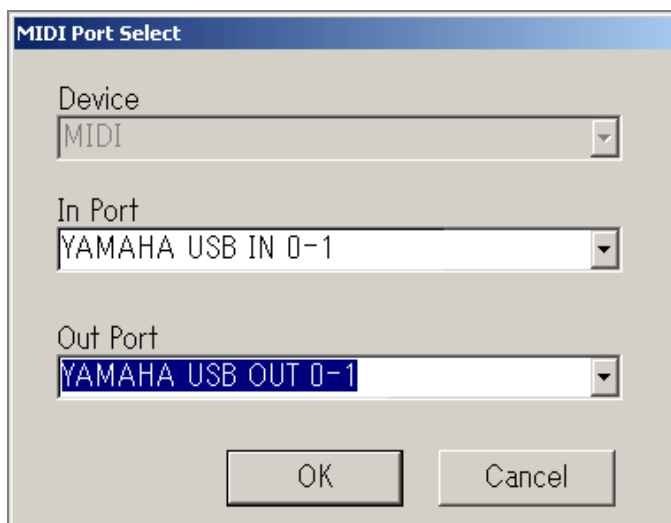
1. Open the Windows Control Panel and click the System icon to open the System Properties window.
2. Click (Hardware tab ->) the Device Manager tab, and then click on "Sound, video, and game controllers" so that the various controllers are listed, as shown in the screen shot below.
3. Check whether "YAMAHA USB MIDI Driver" appears on the list.

- a. If this YAMAHA USB MIDI Driver is not on the list, check that the USB cable connection is secure and that power to Tyros is turned on. If you find that Tyros was not turned on, switch it on and then close and restart Tyros Installer. (To close the Installer, click on the [x] button at the top right of the dialog box.)
- b. If you determine that the YAMAHA USB MIDI Driver is not present on your computer, close Tyros Installer. Install the YAMAHA USB MIDI Driver from TOOLS for Tyros (included CD-ROM), and then start Tyros Installer again.



Once you have confirmed that the YAMAHA USB MIDI Driver is present, you need to set the MIDI Ports.

1. Close the System Properties window.
2. Click the MIDI Port button on Tyros Installer dialog. This will open the MIDI Port Select dialog, shown below.



3. Set both the In Port and the Out Port to YAMAHA USB MIDI 0-1, and then click OK to open the ports.
 - a. If the ports open normally, Tyros Installer will close the Port Select dialog and automatically begin the installation.
 - b. If the YAMAHA USB MIDI IN 0-1 or YAMAHA USB MIDI OUT 0-1 selections are not available in the Port Select lists, click the Cancel button to close the dialog, and then close Tyros Installer. Check that the USB cable is securely connected and that Tyros power is on, and then restart Tyros Installer.
4. If the USB is not working correctly, open the Start menu, select Settings -> Control Panel -> System -> Device Manager -> Universal Serial Bus controllers, and check that each controller is indicated to be working correctly.

Tyros has confirmed that the following controllers work well.

Intel 82801 AA USB Universal Host Controller
Intel 82371 AB/EB PCI to USB Universal Host Controller
Intel 82371 SB PCI to USB Universal Host Controller
Intel 82440MX PCI to USB Universal Host Controller
Intel 82801 BA/BAM USB Universal Host Controller
Intel 82801 DB/DBM USB Universal Host Controller
SIS 7001 PCI to USB Open Host Controller
OPTi 82C861 PCI to USB Open Host Controller
VIA VT83C527/VT72C586 PCI to USB Universal Host Controller
VIA Tech 3038 PCI to USB Universal Host Controller
Ali PCI to USB Open Host Controller
NEC PCI to USB Open Host Controller
AMD 756 PCI to USB Open Host Controller

Tyros OS Version Upgrade List

The following problems are solved on Version 1.20 (revisions from Ver1.10):

Function	Problem
Vocal Harmony	When the Vocal Harmony is turned on or off, the vocal sound is interrupted. The interruption time is decreased on the new version.
One Touch Setting	When the One Touch Setting is selected after choosing a style on Floppy Disk or Hard Disk, Split Points and Fingering type reset to default value.
Registration Memory	When a different song is selected by the Registration Memory, the Chord Detect and VH Song Track settings aren't set correctly.
Song Creator	If a song contains System Exclusive Message of more than 128 bytes and this song is edited by Song Creator, this song can't be played on Tyros.
USB (for HDD Users)	The new file transfer function for Hard Disk is added on the new version. This new function provides approximately 1.6Mbit/sec of average transfer speed between PC and Hard Disk on the Tyros. (The speed depends on the circumstances such as PC performance, file size and so on.) Please refer to the "USB-Storage Mode (HDD) Operation Manual."