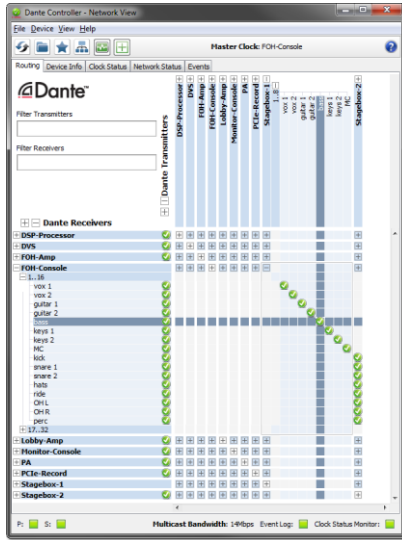


Dante Controller v3.5.0



Release Notes

Software version: **3.5.0** for Windows and Mac OS X
 Document version: 1.2
 23rd January 2014
 Document name: AUD-RNO-Dante_Controller_3.5.0-v1.2

Software Licensing Notice

Audinate distributes products which are covered by Audinate license agreements and third-party license agreements.
 For further information and to access copies of each of these licenses, please visit our website: www.audinate.com/software-licensing-notice

Contacts

Australia: tel. +61 2 8090 1000
 USA: tel: +1 503 224 2998
 Enquiries: info@audinate.com
 Please visit www.audinate.com for further contact information.

1. Release Information

1.1. Release Summary

Dante Controller v3.5.0 is a major release, and includes many new features, such as per-device latency and clock status monitoring, a completely redeveloped presets system, and support for simultaneous connection to a secondary network.

1.2. Release Contents

Item	Version	Description / Location
Dante Controller Windows installer	DanteController-Windows-3.5.0.36.exe	Installer for Windows
Dante Controller Mac OS X installer	DanteController-OSX-3.5.0.36.dmg	Installer for Mac OS X
This release note	AUD-RNO-Dante_Controller_3.5.0-v1.2.pdf	

1.3. Supported Platforms

Platform	Versions
Windows	<ul style="list-style-type: none"> ▪ Windows 7 (SP 1 and above) ▪ Windows 8 ▪ Windows 8.1
Mac OS X	OS X 10.7.5, 10.8.5 and 10.9 (Intel architecture)

1.4. New Features since v3.4.2

- Latency Monitoring for supported devices (currently Brooklyn II, PCIe and MY16 devices are supported – Latency Monitoring will be rolled out to more devices over time). Latency Monitoring allows you to view a real-time histogram of latency performance for a device's audio subscriptions, enabling low-level latency configuration on a per-device basis. Latency monitoring can be used to determine if device latency settings are optimum and/or if there are issues with network switch bandwidth or configuration.
- Clock Status Monitoring – providing real-time statistics about a device's clock synchronization performance, enabling the quick and easy resolution of existing and potential clocking issues, before they impact your event or session
- Connection to secondary networks – providing full visibility and control over your redundant network, even if a connectivity issue occurs on the primary network
- A new Network Status tab, displaying comprehensive network data for all devices across both primary and secondary networks
- Completely new presets system – enabling the quick and easy backup and reuse of network configurations
- Enhanced Events tab – providing clearer visibility of network and device events
- The new Status Bar displays the status of connectivity to the primary and secondary networks, multicast bandwidth (previously shown in the toolbar), and notification icons for the event log and the clock status monitor
- Channel grouping – allowing improved control over channel routing for devices with high channel counts
- The Clock Status tab has been enhanced
- The Device Status tab is now called Device Info
- New look and feel
- Various performance improvements
- Windows 8.1 support
- Dante Controller is no longer supported on Windows XP

1.5. Known Issues

None.

1.6. Bug fixes since v3.4.2

Issue Number	Item
#4306	Unsupported device latencies are now successfully hidden on a per-device basis.
#5203	Text strings can now be used for Product Version.
#5340	Subscription icons are now only shown at device level (not at channel level) if the subscription is invalid but audio is still flowing.
#5461	Dante Controller now displays an information dialogue if the Dante Discovery service is not running at startup.
#5888	It was impossible to enter a device name if the first two characters were the same.
#5976	Device names now support a numeral as the leading character.
#6141	A subset of invalid characters were accepted in device names. This has been fixed.
#5492	Rapidly changing device parameters on some devices could cause Dante Controller to crash with the message "Error processing schedulable 'SelectProcessor' "
#2688	With the Receive tab open, after changing sample rates Dante Controller would display available channels for both old and new sample rates.
#6053	On OS X, it was impossible to run Dante Controller under two user accounts simultaneously.
#6167	In the available channels list in the Receive tab, Dante Controller now filters out devices on mismatching clock domains.
#6326	The Encoding drop-down menu did not fully display private encoding names.
#6409	Dante Controller now rejects primary static IP addresses that are reserved for the secondary network.
#6509	MY16 devices would occasionally show 0k as the default option for sample rate change.

Issue Number	Item
#6610	Transmit-only and receive-only devices are now hidden where appropriate, and displayed with only their supported configuration options.
#2695	Sample rates are now displayed with 1 decimal point where appropriate.
#5250	Grid view now shows full-length device names in full.
#2398	Device names now correctly revert to the default name when changed to "".
#6799	Clicking Refresh on any tab in Device View would reset the view to the Status tab.

1.7. Installing or Updating Dante Controller

To install Dante Controller you will need to be logged on with administrator privileges for both Windows and Mac systems.

1.7.1. Windows

Note: You do not need to uninstall the previous version before installing v3.5.0.

To install Dante Controller on Windows:

- Ensure you are logged on to your computer as an administrator.
- Navigate to and double-click the downloaded 'DanteController-Windows-3.5.0.36.exe' installer file.
- Read the license agreement. If you agree to the terms, select the 'I agree' checkbox and click Install.
- If you do not agree to the terms, click Close.
- Confirm / acknowledge any Windows security prompts that are displayed.

1.7.2. Mac OS X

Note: You do not need to uninstall the previous version before installing v3.5.0.

To install Dante Controller on Mac OS X:

- Ensure you are logged on to your computer as an administrator.
- Double-click the downloaded 'DanteController-OSX-3.5.0.36.dmg' installer file.
- A drive icon will appear on your Desktop Finder window. Double-click it to open.
- Double-click the Dante Controller.pkg file. This will run the installer.
- Read the license text, and if you accept the terms of the agreement, click Agree.
- If you do not accept these terms, click Disagree to terminate the installation.