

Yamaha Network USB Serial Driver Installation Guide

Information

- This software and Installation Guide are the exclusive copyrights of Yamaha Corporation.
- Copying of the software or reproduction of this Installation Guide in whole or in part by any means is expressly forbidden without the written consent of the manufacturer.
- Yamaha makes no representations or warranties with regard to the use of the software and documentation and cannot be held responsible for the results of the use of this Installation Guide and the software.
- Future upgrades of driver and any changes in specifications and functions will be announced at the following website.
<http://www.yamaha.com/proaudio/>
- Windows is the registered trademark of Microsoft® Corporation.
- The company names and product names in this manual are the trademarks or registered trademarks of their respective companies.

What is Yamaha Network USB Serial Driver

Yamaha Network USB Serial Driver is driver software for Windows for connecting the USB CONSOLE port of a Yamaha network device to a computer with a USB cable, and using CLI (Command Line Interface) of the Yamaha network device by terminal software on a computer.

Yamaha Network USB Serial Driver Installation

Follow the steps below to install the software.

NOTE

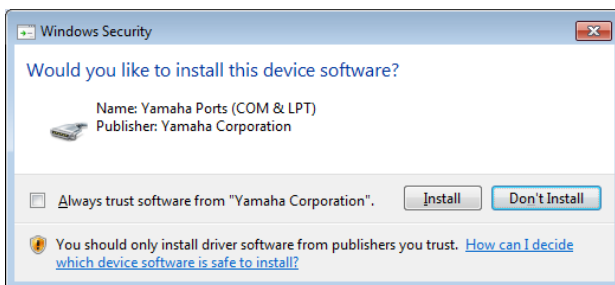
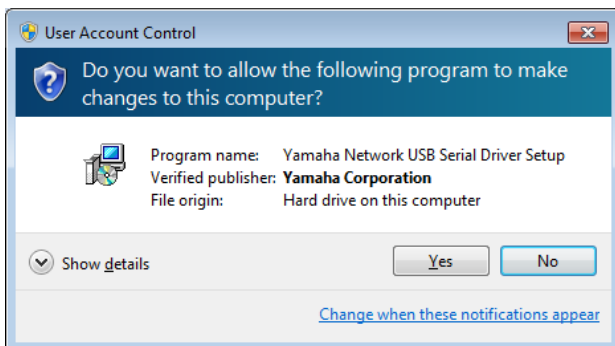
- You are only permitted to use this software pursuant to the terms and conditions of the “License Agreement” shown during the installation.
- If the same software components have already been installed in your computer, you can use the same procedure as described in the Installation instructions here to update the software.

For information on the OS requirements for the software and download, refer to the following website.

<http://www.yamaha.com/proaudio/>

Preparation

If the following warning messages appear during the installation, click [Yes] or [Install].



Installation

- 1 Turn off the computer.**
- 2 Disconnect all USB devices other than the mouse and keyboard from the computer.**
- 3 Start the computer and log on to the Administrator account.**
Exit any open applications and close all open windows.
- 4 Double-click “Setup.exe” in the compressed file (you have downloaded).**
- 5 Follow the on-screen instructions to install the software.**
- 6 When installation has been completed, click [Finish].**
If a window requiring you to restart your computer appears, follow the on-screen instructions and restart the computer.

Device Connection

- 7 Connect the device directly to the computer by using the USB cable.**
- 8 Turn on the device (if device is turned off).**
When the notify area shows a message such as “Installing device driver software” or “Setting up a device,” wait for a while, keeping the USB cable connected. Setup is complete when a message such as “Your device is ready to use” or “Device setup completes” is shown.

Confirmation of Installation

- 9 Open the “Device Manager” window as follows.**
Windows 7/8.1/10
[Control Panel] → ([Hardware and Sound]) → [Device Manager]
Windows 10
Right click [Start] → [Device Manager]
- 10 Click on the [>] mark next to “Universal Serial Bus controllers.”**
- 11 Confirm that the “Yamaha USB Serial” and “Yamaha USB Serial Composite Device” are listed.**

Installation of the software is now complete.

Uninstalling the Yamaha Network USB Serial Driver

- 1 Turn off the computer.**
- 2 Disconnect all other USB devices except mouse and keyboard from the computer.**
- 3 Start the computer and log on to the Administrator account.**

Exit any open applications and close all open windows.
- 4 Open the window for the uninstall operation as follows.**
- 5 Click the “Yamaha Network USB Serial Driver” to be uninstalled from the list.**
- 6 Uninstall them as follows.**

Click the [Uninstall] / [Uninstall/Change].
If the “User Account Control” window appears, click [Continue] or [Yes].
Follow the on-screen instructions to remove the software.

Uninstallation of the software is now complete.

Windows 7/8.1/10

Select [Control Panel] → [Uninstall a program] or [Programs and Features] to call up the “Uninstall or change a program” panel.

Windows 10

Right click [Start] → [Apps and Features]