

Dante Firmware Update Guide

Notice

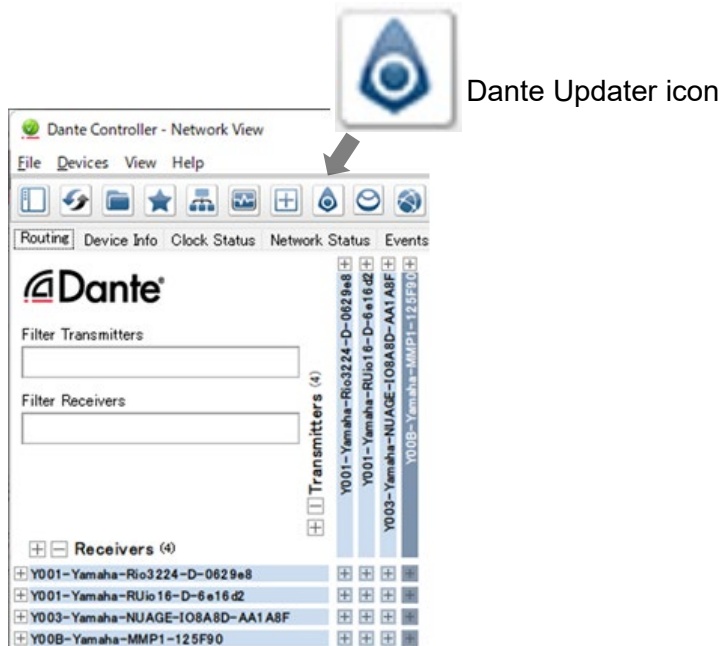
- This guide is based on Dante Updater 2.2.1 (Dante Controller v4.6.0.8). The illustrations of the guide may differ depending on the version.
- The user assumes full responsibility for the update.
- Update the firmware components one device at a time.
- Please note that the device may be damaged if you fail to follow these instructions properly, or if you turn off the device or disconnect the cable while the update is in progress.
- If the update fails, and the device still does not operate correctly even after you execute the update once again, please contact your Yamaha dealer.
- Yamaha Corporation owns exclusive copyrights for the Yamaha firmware and this guide.
- Audinate owns exclusive copyrights for the Dante firmware and its update program.
- It is prohibited to duplicate or modify the firmware, software or guides, in part or in their entirety, without permission from the copyright owner.
- The screen shots as shown in this guide are for instructional purposes only.
- Audinate®, the Audinate logo and Dante® are registered trademarks of Audinate Pty Ltd.
- The company names and product names in this document are the trademarks or registered trademarks of their respective companies.
- Software may be revised and updated without prior notice.

Depending on the device you are using, you may need to perform the operations described in the [Appendix](#) section, summarized at the end of this document. Make sure to check it before updating.

Installing and Launching Dante Updater

Dante Updater is included in the Dante Controller software.

If you have used Dante Controller before, launch the software and check if it has the Dante Updater icon as shown below.



If the Dante Updater icon is not shown on Dante Controller, update the software to the latest version, available from the Audinate website below.

<https://my.audinate.com/support/downloads/dante-controller>

Updating the Firmware

Downloading a firmware file

When updating a device, download the appropriate firmware file from the Yamaha website.

In this example, search for and download the MMP1 firmware file.

<https://usa.yamaha.com/support/updates/index.html>

Firmware / Software Updates

1 Professional Audio >> 2 MMP1 3 Search

4

Name
MMP1 Firmware V1.10-2
MMP1 Firmware V1.10 (Previous version)
MMP1 Firmware V1.02-2 (Previous version)

- **Note:** Please note that the search result may include all the related software and older firmware versions.

License Agreement and Download File

ATTENTION

PLEASE READ THIS SOFTWARE LICENSE AGREEMENT ("AGREEMENT") CAREFULLY BEFORE USING THIS SOFTWARE. YOU ARE ONLY PERMITTED TO USE THIS SOFTWARE PURSUANT TO THE TERMS AND CONDITIONS OF THIS AGREEMENT. THIS AGREEMENT IS BETWEEN YOU (AS AN INDIVIDUAL OR LEGAL ENTITY) AND YAMAHA CORPORATION ("YAMAHA").

BY DOWNLOADING OR INSTALLING THIS SOFTWARE, YOU ACCEPT THE TERMS OF THIS LICENSE. IF YOU DO NOT AGREE TO THESE TERMS, DO NOT DOWNLOAD OR INSTALL THE SOFTWARE AND DO NOT USE THE SOFTWARE.

GRANT OF LICENSE AND COPYRIGHT

Yamaha hereby grants you the right to use the programs and data files composing the software accompanying this Agreement, and any programs and files for upgrading such

5 Check to accept the license agreement.

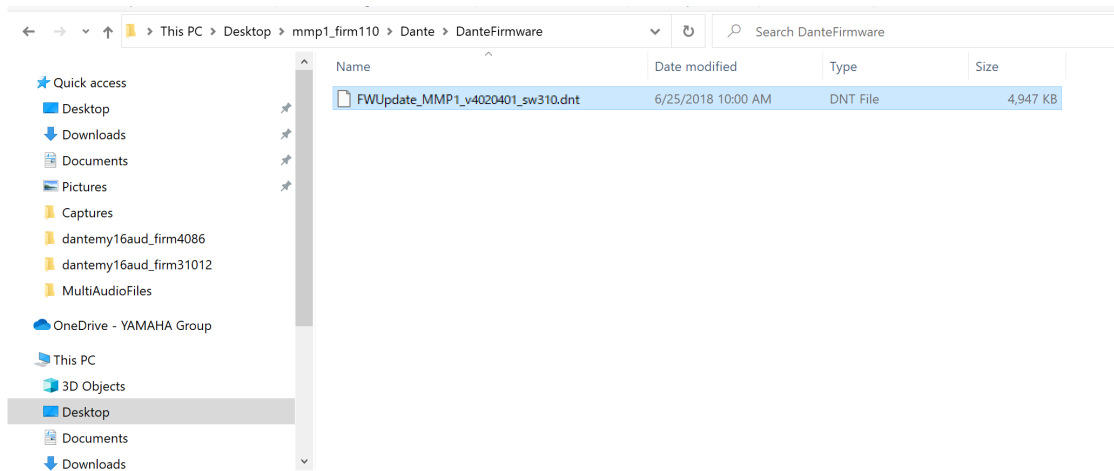
Yes, I agree

mmp1_firm110-2.zip (110.1MB)

6 Click here to download the file.

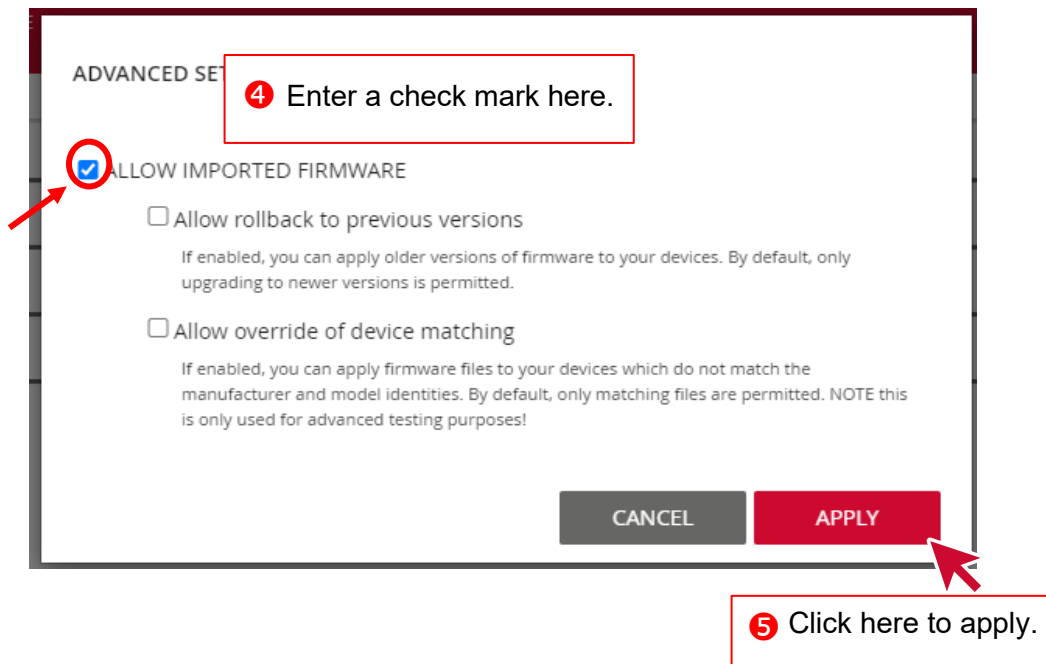
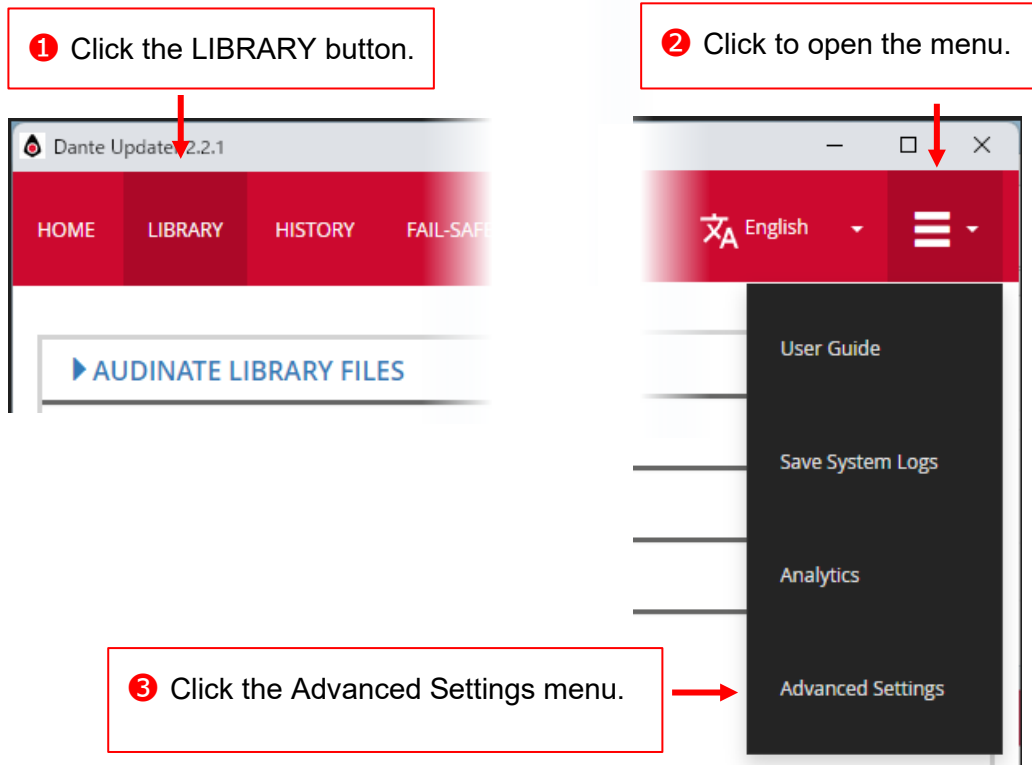
Extracting the firmware file

The downloaded firmware file is compressed (zipped). You will need to extract the file and store it in a directory where you can easily access it. The firmware file is in the “DanteFirmware” folder.



Allowing import of the firmware

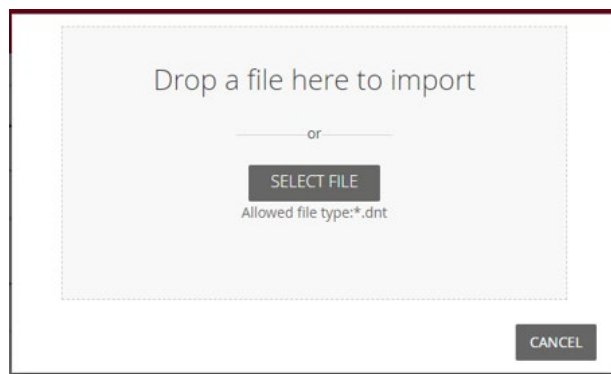
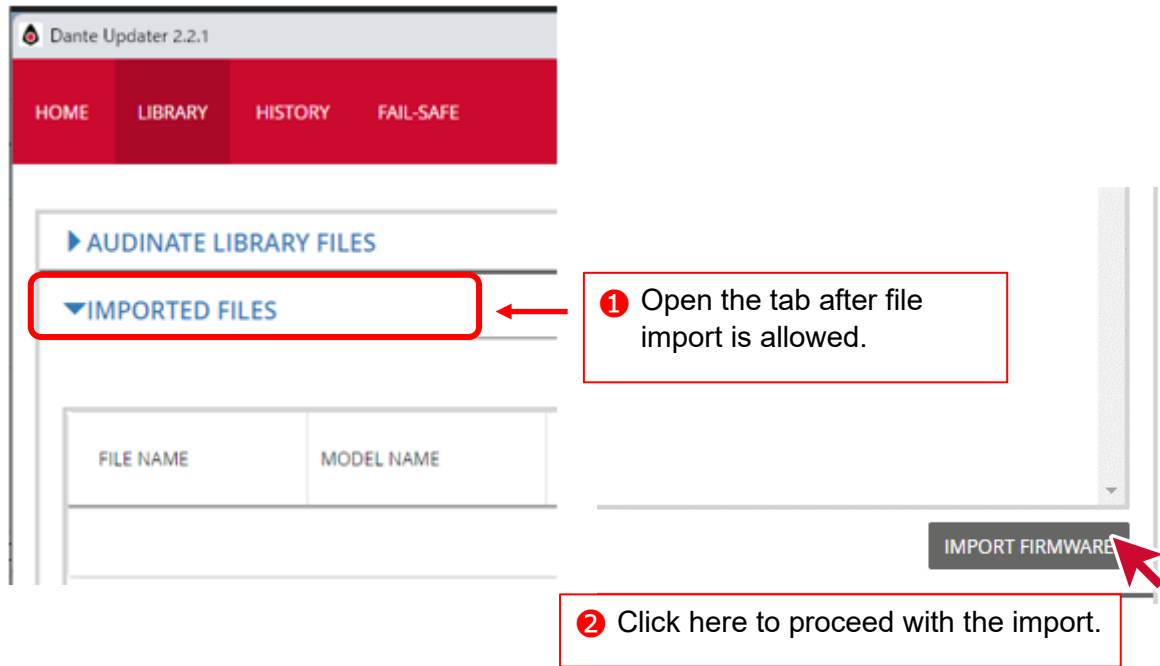
Launch Dante Updater and follow the steps below to set up Dante Updater to allow importing of the downloaded firmware file to Dante Updater and uploading of firmware files to the device.



Importing the firmware file

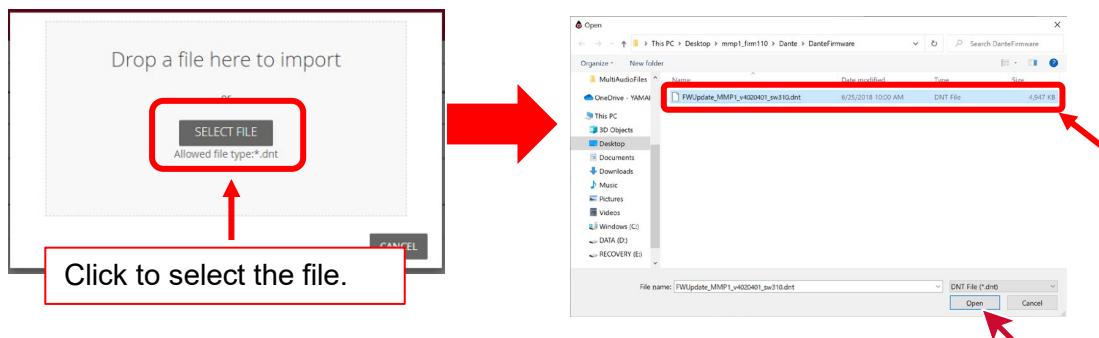
When files are ready to be imported, the IMPORTED FILES tab appears as shown below. Click the tab to open the list, and then open the popup window to import.

Your computer must be connected to the Internet when importing firmware files.

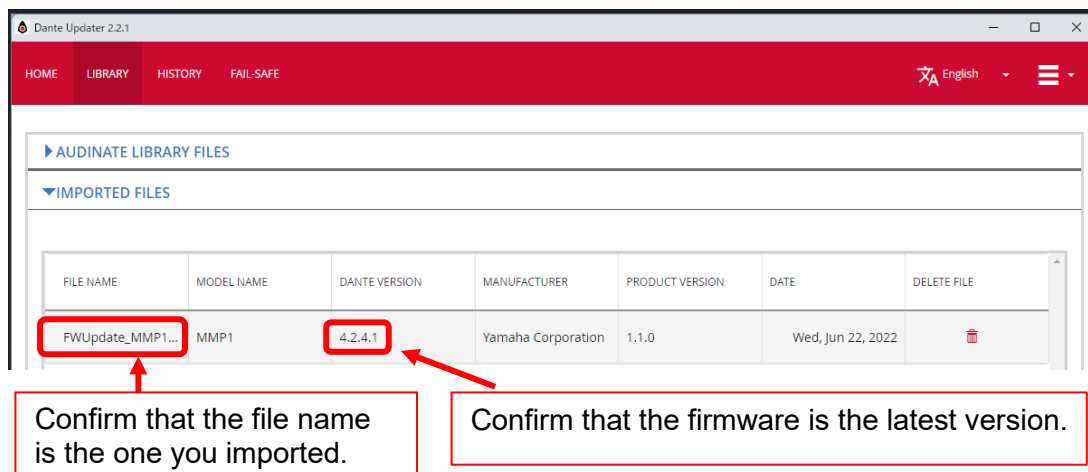


There are two methods for importing the firmware file: either **dragging and dropping the file** or **clicking the SELECT FILE button** to select the file. In this example, we will import the following file by clicking the “SELECT FILE” button.

“FWUpdate_MMP1_v4020401_sw310.dnt”



When the firmware file is imported successfully, it will appear in the IMPORTED FILES tab.



Updating the device

Go back to the “HOME” menu, and expand the firmware item shown in the IMPORTED FIRMWARE FILES list.

1 Click the HOME menu tab.

2 Click the tab to expand the list.

3 Click the appropriate tab.

4 Click here to proceed with the update.

Confirm that the firmware is the latest version.

- **Note:** If the connected device has a different Dante module than the imported file, the device will not be displayed in the list. Please check whether the file corresponding to the Dante module of the connected device has been imported. You can check the type of Dante module in Dante Controller. Check the contents displayed in Dante Model in the Dante Information frame of the Status tab for each device.

Manufacturer Information

Manufacturer: Yamaha Corporation
Model Name: Rio3224-D2
Product Version: V1.80
Software Version: 3.1.0
Firmware Version: 2.0.5

Dante Information

Dante Model: Brooklyn II
Dante Firmware Version: 4.2.1.2
Hardware Version: 4.0.3.7
ROM/Boot Version: 1.3.80


Clock Synchronization

Mute Status: Unmuted
Sync Status: Locked
External Word Clock: No
Preferred: No
Frequency Offset: 0 ppm

Interfaces

IP Address: 192.168.100.6
MAC Address: 08:1D:C1:10:75:D4
Tx Utilization: 26 Kbps Errors: 0
Rx Utilization: 16 Kbps Errors: 0

A notice appears before the update. Enter a check mark and start the update.

 Do not power off or disconnect your computer or devices while updates are in progress

understand that audio will be interrupted.

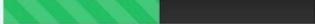
5 Enter a check mark here.

CANCEL UPDATE NOW

6 Click here to start the update.

Wait until the update is complete.

UPDATING IN PROGRESS

DEVICE	IP ADDRESS	UPDATE STATUS
Y00B-Yamaha-MMP1-125F90	169.254.28.113	

- **Notice:** Do not turn off the computer or the Dante device until the update is complete.

Completing the update

Restart the device after the file is uploaded.

UPDATING COMPLETED

DEVICE	IP ADDRESS	UPDATE STATUS
Y00B-Yamaha-MMP1-125F90	169.254.28.113	<input checked="" type="checkbox"/> REBOOT REQUIRED

SELECT ALL REBOOT SELECTED DEVICES

1 Enter a check mark here.

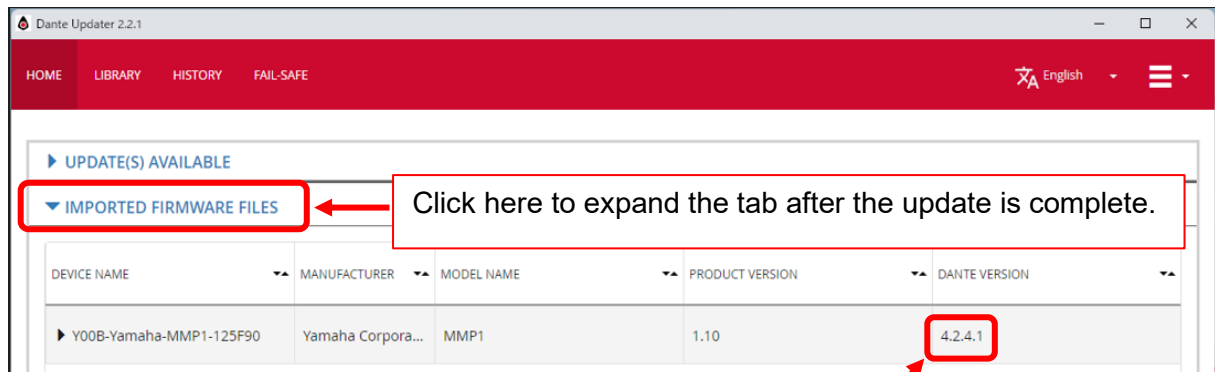
2 Click here to restart the device.

Update completes after the device is restarted.

DEVICE	IP ADDRESS	UPDATE STATUS
Y00B-Yamaha-MMP1-125F90	169.254.28.113	<input checked="" type="checkbox"/> Successful

Confirming the firmware version after the update

After restarting the device, make sure that the device is up to date.



Click here to expand the tab after the update is complete.

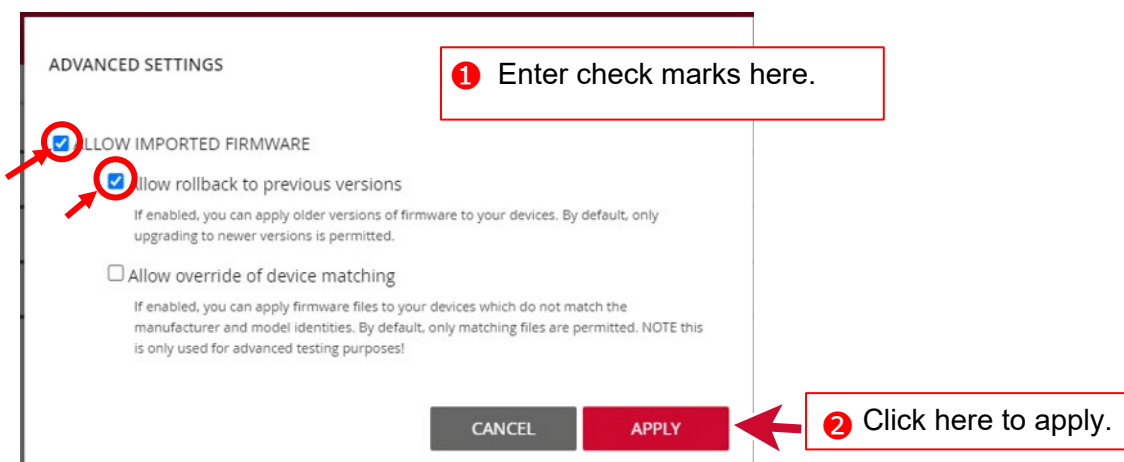
Confirm that the firmware is the latest version.

Downgrading the Firmware Version

Downloading and importing the firmware file

If you need to downgrade a device to a previous firmware, download the appropriate firmware file and set up Dante Updater as below.

1. See "[Downloading a firmware file](#)" and "[Extracting the firmware file](#)" for instructions on downloading a firmware file. Also, refer to "[Allowing import of the firmware](#)," and then enter a check on the item shown in the figure below.



- **Notice:** Make sure **NOT** to enter a check on the item below.

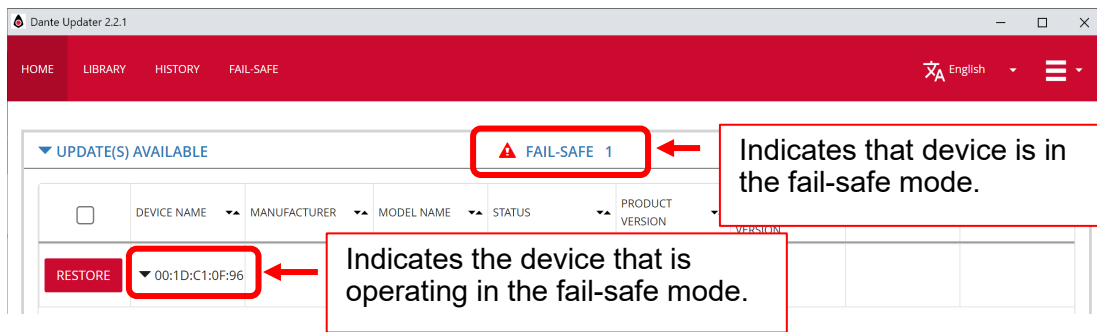
Allow override of device matching

2. For instructions on importing the downloaded firmware file, refer to "[Importing the firmware file](#)."
3. Since the downgrade procedure is the same as for updating, refer to "[Updating the device](#)" to "[Confirming the firmware version after the update](#)."

Fail-Safe Mode

What is the fail-safe mode?

Fail-safe mode is a protection function that safely controls and restores the Dante devices in the event of a failure caused by an incorrect operation or malfunctioning behavior of the devices.

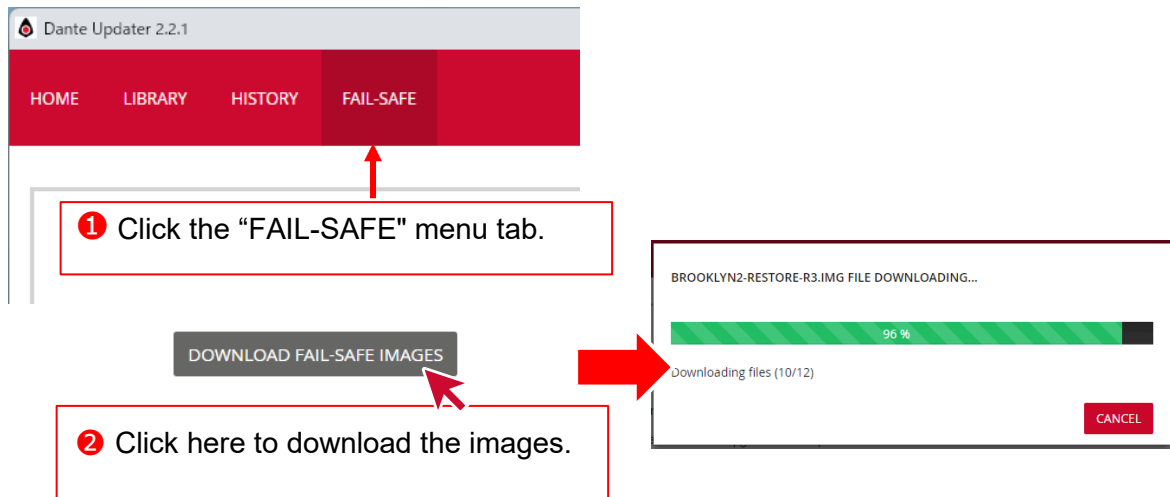


- **Note:** Fail-safe mode cannot run when multiple network interfaces are enabled. Make sure that only the connection with the Dante device to be restored is enabled, and that all others are disconnected or disabled.

Preparation for restoring the device

Download the image files for restoring the firmware. Wait until the files are fully downloaded.

Internet connection is required.



When the download is complete, the 2 button changes to the following.

✔ Fail-safe images are up-to-date

Executing the restoration

Go back to the “HOME” menu, follow the procedure below to restore the device that can be found in the UPDATE(S) AVAILABLE list.

1 Click the tab to expand the list.

2 Click here to proceed.

3 Click the OK button.

4 Click here to start the restoration.

Completing the restoration

Wait until the image files are uploaded.

Flashing device, Please wait

Recovery complete.
You may need to manually reboot your device to complete recovery.

After the restoration is complete, the device information appears.

DEVICE NAME	MANUFACTURER	MODEL NAME	PRODUCT VERSION	DANTE VERSION
Y003-Yamaha-MMMP1-0F9622	Yamaha Corpora...	MMP1	1.10	4.0.9.1

After recovery, the device will be listed under either “UPDATE(S) AVAILABLE” or “CONSULT MANUFACTURER.”

Appendix

This summarizes the specific operations and instructions required depending on the device you are using. Please check if the name of your device is listed here.

HY144-D-SRC

When “[extracting the firmware file](#),” there are five types of firmware for “HY144-D-SRC.” Refer to table 1 below for differences among them, and then import the target file.

Table 1

Mode	SRC	Input CH	Output CH
144io	No	144	144
144io Sync SRC	Yes (Sync)	144	144
72io Async SRC	Yes (Async)	72	72
144i Async SRC	Yes (Async)	144	0
144o Async SRC	Yes (Async)	0	144

If you intend to switch modes frequently, repeat the procedure of “[Importing the firmware file](#)” to import all necessary firmware files for your future convenience.