

## VXS1ML Revit Family

This operation manual will explain how to set VXS1ML “Family” in a “Project”

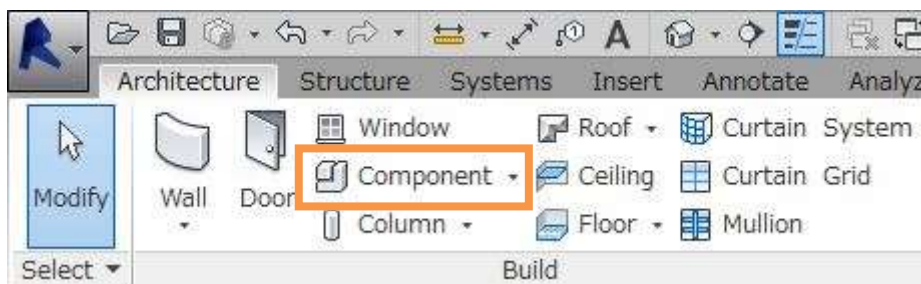
VXS1ML has two types of family

VXS1ML-wall.rfa is the family for surface mount and VXS1ML-ceiling.rfa is the family for ceiling mount. Both “Family” are created by Revit 2016 version.

### To set family for surface mount (VXS1ML-wall.rfa)

#### 1) Load “Family”

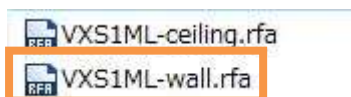
Click “Architecture”, then “Component”



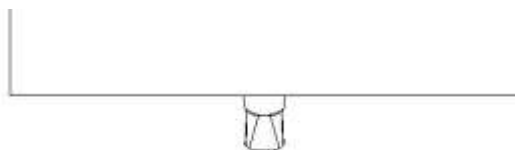
Click “Load Family” from the “Mode” Panel



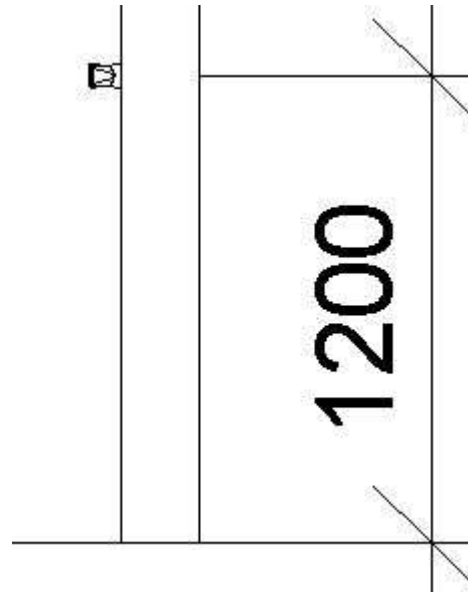
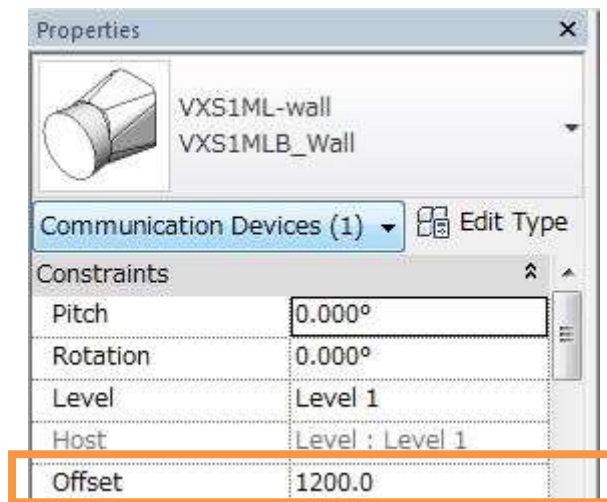
Select VXS1ML-wall



#### 2) Mount the VXS1ML to the wall



3) Input the “Offset” value in Properties to adjust the placement height



4) There are two types of “Family” for surface mount.

Select the type of family from the “Type Selector

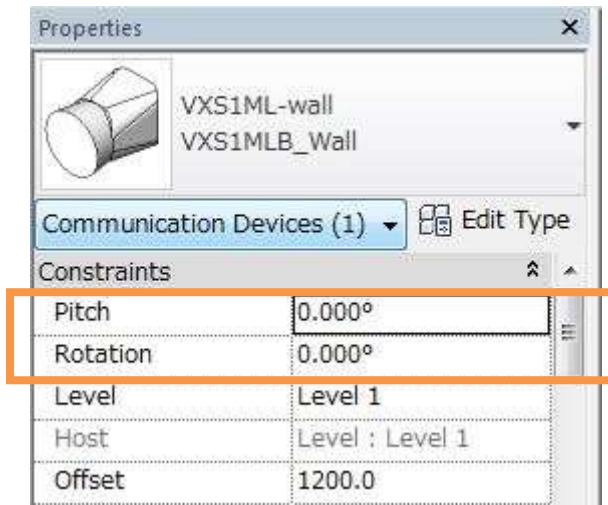


VXS1MLB Wall



VXS1MLW Wall

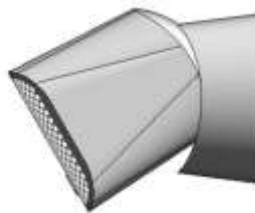
5) Input the Pitch and Rotation value in Properties to adjust the angle



For Pitch, input the vertical rotation angle



Pitch=0



Pitch=-30

For Rotation, input the rotation angle of surface



Rotation=0



Rotation=45



Rotation=90

6) For the specification of the speaker, check from the “Type properties”

**Type Properties**

Family: VXS1ML-wall Load...

Type: VXS1MLW\_Wall Duplicate... Rename...

Type Parameters

Parameter	Value
<b>Dimensions</b>	
Width	62mm (2.4")
Height	62mm (2.4")
Depth	82mm (3.2")
<b>Identity Data</b>	
Manufacturer	Yamaha
Model	VXS1MLW
IQ Category	Loudspeakers
Manufacturer URL	<a href="https://www.yamaha.com">https://www.yamaha.com</a>
Product Page URL	<a href="https://www.yamaha.com/proaudio/">https://www.yamaha.com/proaudio/</a>
Product Documentation Link	<a href="https://www.yamaha.com/proaudio/">https://www.yamaha.com/proaudio/</a>
A&E Specification	The loudspeaker shall be of surface-
<b>Other</b>	
Sensitivity	79
Power Handling	10
SPL Max	92
Impedance	8
Coverage Horizontal	170
Coverage Vertical	170
70V Taps	-
100V Taps	-
Regulatory Compliance	-
Net Weight	0.17kg

\*Note!

The material shown in the “Material and Finishes” in “Type properties” are different to the material of the actual product.

Materials and Finishes	
body	ABS-black
cover	perforated aluminum-black

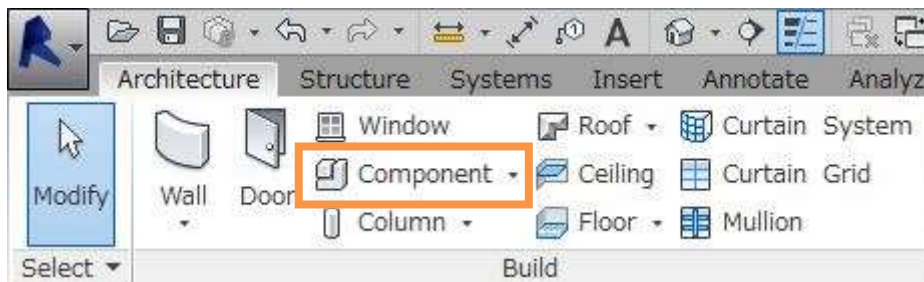
### To set family for VXS1ML-ceiling.rfa

1) Load “Family”.

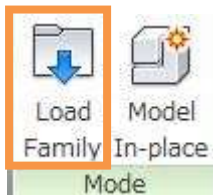
Note

The “Family” for ceiling cannot be placed without a ceiling.  
Please set the reflected ceiling plan

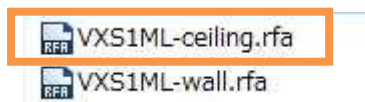
Click “Architecture”, then “Component”



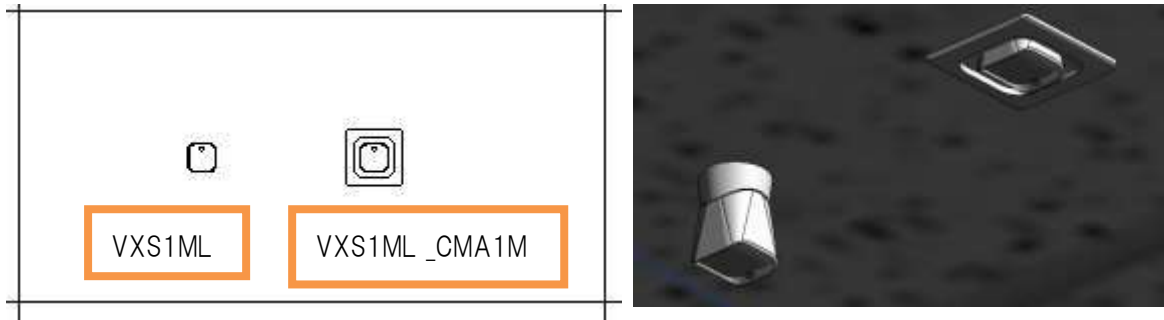
Click “Load Family” from the “Mode” Panel



Select VXS1ML-ceiling

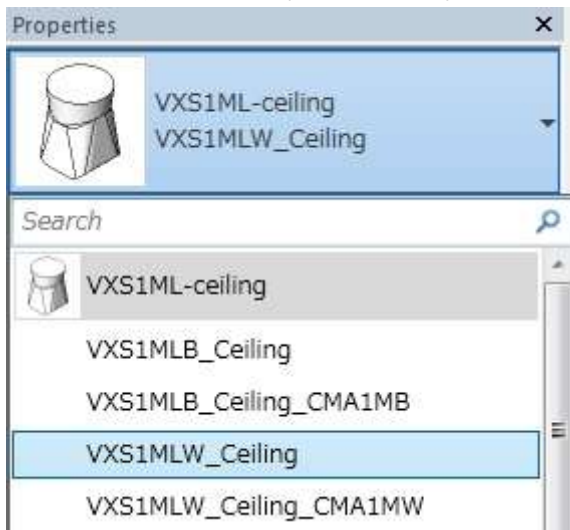


2) Place the VXS31ML on the ceiling

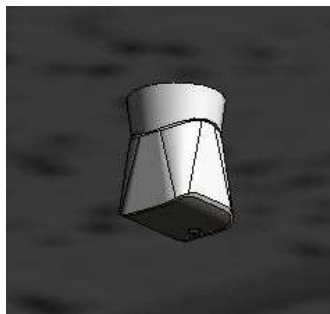


3) There are four types of “Family” for surface mount.

Select the type of family from the “Type Selector”



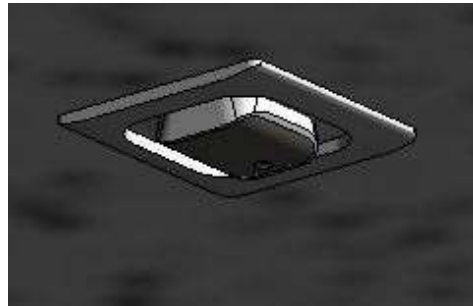
VXS1MLB\_Ceiling



VXS1MLW\_Ceiling

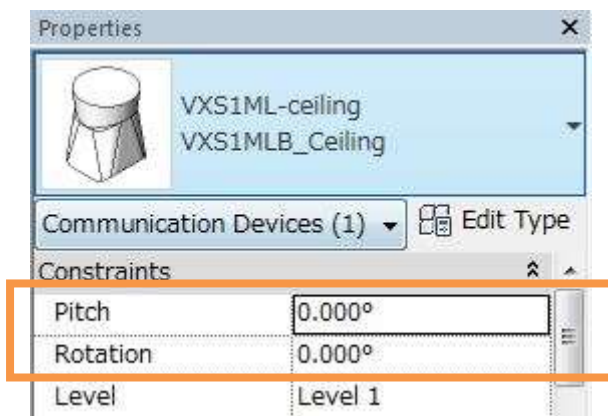


VXS1MLB\_Ceiling\_CMA1MB

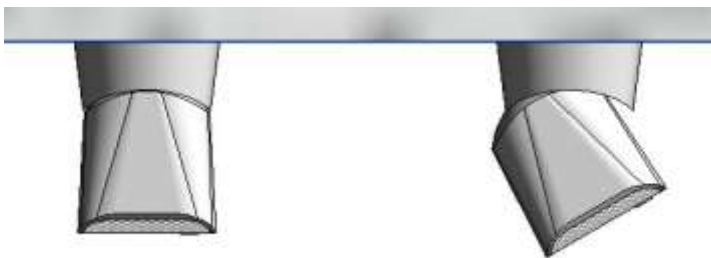


VXS1MLW\_Ceiling\_CMA1MW

4) Input the Pitch and Rotation value in Properties to adjust the angle.



「Pitch」には、垂直の回転角度を入力してください。



Pitch=0

Pitch=-30

For Rotation, input the rotation angle of surface.



Rotation=0



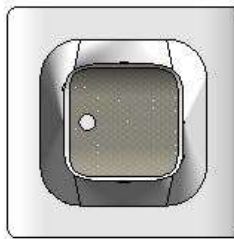
Rotation=45



Rotation=90



Rotation=0



Rotation=90



5) For the specification of the speaker, check from the “Type properties

**Type Properties**

Family:  Load...

Type:  Duplicate... Rename...

Type Parameters

Parameter	Value
<b>Dimensions</b>	
Width	62mm (2.4")
Height	62mm (2.4")
Depth	82mm (3.2")
<b>Identity Data</b>	
Manufacturer	Yamaha
Model	VXS1MLW
IQ Category	Loudspeakers
Manufacturer URL	<a href="https://www.yamaha.com">https://www.yamaha.com</a>
Product Page URL	<a href="https://www.yamaha.com/proaudio/">https://www.yamaha.com/proaudio/</a>
Product Documentation Link	<a href="https://www.yamaha.com/proaudio/">https://www.yamaha.com/proaudio/</a>
A&E Specification	The loudspeaker shall be of surface-

Other	
Sensitivity	79
Power Handling	10
SPL Max	92
Impedance	8
Coverage Horizontal	170
Coverage Vertical	170
70V Taps	-
100V Taps	-
Regulatory Compliance	-
Net Weight	0.17kg

\*Note!

The material shown in the “Material and Finishes” in “Type properties” are different to the material of the actual product.

The parameter value of “Constraints” is the parameter for the bracket to embed the speaker.

Please do not change the value.

Constraints	
CMA1M-N	<input checked="" type="checkbox"/>
CMA1M-Y	<input type="checkbox"/>
Materials and Finishes	
body	ABS-black
cover	perforated aluminum-black