



Genos2



EN

WSCTG2EN

Yamaha Music Europe GmbH • Siemensstr. 22-34 • 25462 Rellingen/Germany
www.yamaha.com

The descriptions and photos in this brochure are for information only. YAMAHA reserves the right to change the products and technical data at any time without notice. As the technical data may vary from country to country, please obtain information from your Yamaha subsidiary. No liability is accepted for printing errors. Status: December 2023.

YOUR NEXT MASTERPIECE

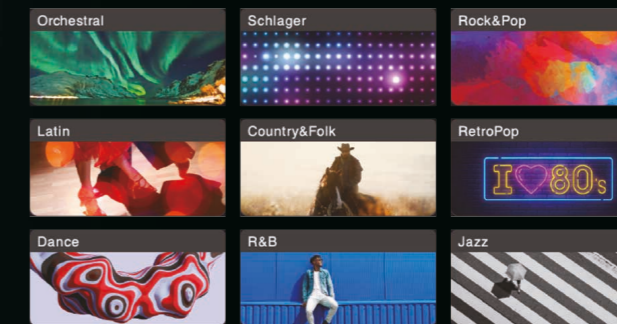
Pushing the boundaries of Arranger Workstation sound, our new flagship, Genos2, includes the legendary DX7 FM technology, cutting-edge Ambient Drums and Steinberg's acclaimed REvelation Reverb. With Style Dynamics Control you're in charge of the energy and dynamics of all 800 preset Styles, bringing a whole new musical dimension to Style playing. Together with the new brighter, anti-reflective display and Live Control LEDs, the features of Genos2 combine to deliver the richest of musical experiences.

Genos²





More than 1900 Voices and 800 Styles

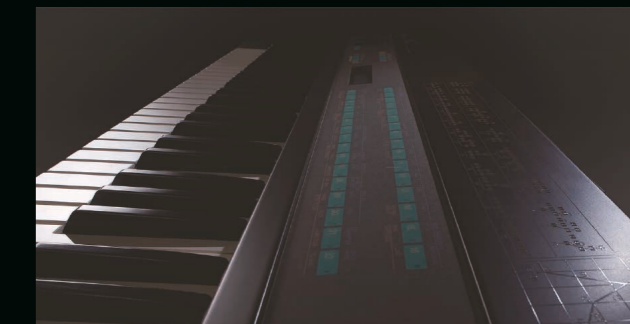


With over 1900 of the highest quality Voices and 800 Styles with One Touch Settings covering a vast array of musical genres, you will immediately be inspired to play your favorite songs or even create new musical ideas and compositions. Over 200 Styles are brand new, with all existing Styles being fully upgraded to use new Voices and effects, including FM tone generation and the ability to use Ambient Drums and Style Dynamics Control. The result is a high-end professional production.

One of the most important sounds for any keyboard player is the Piano, so we have not only added new Pianos, but also reprocessed existing Pianos to a much higher quality. The CFX, being Yamaha's flagship grand piano, now has more dynamic layers, 88 keys sampling and double length samples compared to its predecessor. In addition, we can choose from a Character Grand, which is a German 1980s well played-in piano, giving a more edgy yet rounded sound, perfect for Pop and Jazz music. The U1 Upright being Yamaha's top end Upright piano has been tuned to provide a contemporary flavor for modern Pop songs. If it's a more cinematic sound you're looking for, you can try the rich melancholy sound of the new Felt Piano.

S.Art2 Voices remain cutting edge in terms of their playability and realism, providing articulations and legato joins unparalleled in any hardware keyboard instrument. There are even more to choose from in Genos2, covering not only the full orchestral palette but also more ethnic flavors such as Duduk, Shakuhachi and Celtic Flute perfect for Movie scores.

Legendary FM Synthesis

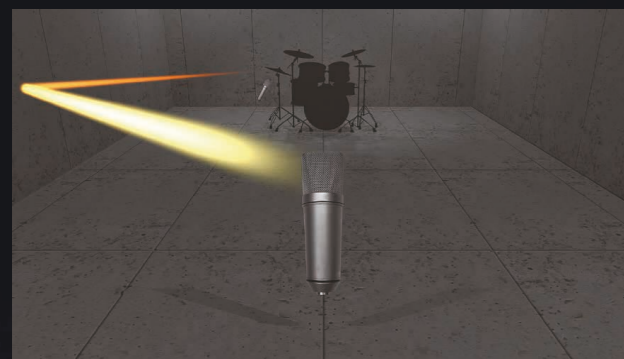


In an Arranger Workstation first, Genos2 features a dual engine tone generator with not only AWM technology but now also FM synthesis.

FM has a rich, dynamic sound and powered Yamaha's legendary DX7, an instrument which defined the sound of the 1980s. The iconic DX7 presets and a range of new, modern FM Voices are integrated into the Styles and One Touch Settings and available to play at the touch of a button, bringing a warm, fresh sound to Genos2.

IMPACTFUL

Ambient Drums



With the new Ambient Drums and using a single Live controller, you can choose anything between a punchy, dry, direct drum sound to a more distant, reflective, ambient room sound, providing endless possibilities for your Style playback. Drums are the backbone of any rhythm section so to have this level of control of the Drum sound will really enhance your playing experience.

Style Dynamics Control



For the first time in an Arranger Workstation the energy and dynamics of all Styles, including User Styles, can be adjusted using a simple Live controller. Whether you want your backing band to play at a soft pianissimo level, a hard fortissimo level or anything in between, the choice is now yours.

REvelation Reverb



Reverb is often overlooked but we experience it around us everyday. In Arranger Workstations, reverb is used on Voices, Styles, MIDI Songs, Multi-Pads and the Mic Input, which is why introducing REvelation Reverb from Steinberg has such a big impact on the sound of Genos2.

REvelation is extremely high resolution, resulting in a transparent, natural sound, making it the perfect partner for an Arranger Workstation where the reverb must work across a wide range of Voices, Styles and even vocals.



INTUITIVE

Controllers, now with LEDs

The knobs and sliders are a convenient way to control many aspects of your performance. Genos2's updated Live Control surface now has LEDs to indicate, at a glance, the position of controls, which now also include a 'catch' function, reducing the risk of unintended operation during performance.



INSPIRING

Vocal Harmony

Vocal Harmony presets, including standard duet, jazzy quartet, big choir and more, can be applied to your voice, adding multiple harmony parts and effects.

Be creative with the Synth Vocoder, manipulating synthesized sounds just by singing into a mic. Vocal Harmony gives the performer a wide range of vocal expression and possibilities which can be enjoyed at home or on stage.



Big, bright and clear displays

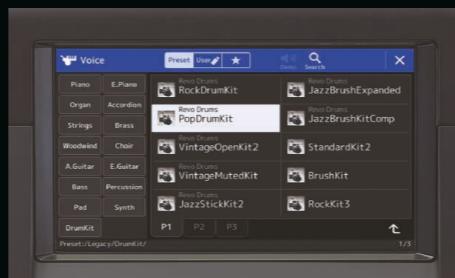
At the center of Genos2's operation is the large 9-inch touch screen which is now brighter, includes an anti-reflective coating and has been tilted an additional 5 degrees towards the player. Additionally, the sub-display now includes selectable light and dark modes. So whether you're performing indoors, outdoors or under stage lighting, the Genos2 displays will be clearly visible.



Playlist

Playlist is the best way to organize Registration Memory banks into convenient Playlists for instant recall during performance. With the updated user interface, Playlist entries can be sorted A to Z, or Z to A, you can jump alphabetically through Playlist records as well as filter for a specific term in the records.

If you are importing MusicFinder records from an older instrument, the Style name will be automatically included in the new Playlist record name.

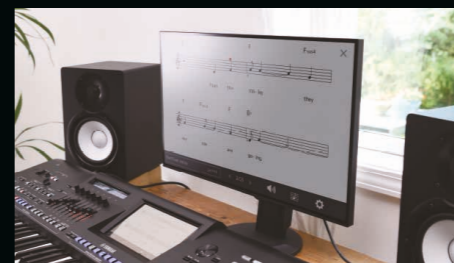


Lyrics display

Connect your Genos2 to an external display or TV using the new HDMI port.

Perfect if you're entertaining a crowd or hosting a party, you can instantly show the lyrics of your MIDI and Audio songs for everyone to see and sing-along.

In addition, you can also mirror the main display or view a musical score, which can be useful if you're playing in a duo or band.



Chord Looper

The new panel buttons provide quick access to recording and playing back chord sequences in realtime. Whether you wish to free up your left hand to play full piano, build up sections of a song or practice a difficult piece of music, the Chord Looper enables you to store up to 8 chord sequences in each bank for easy access during your performance.

You can create an unlimited number of banks with your own chord progressions, or choose from a range of built-in presets.



POWERFUL

With its powerful Voices, Styles, DSP and functionality, Genos2 is a versatile Arranger Workstation you can rely on whether it's being used at Home, on Stage or in the Studio.



DISCOVER, CREATE, INNOVATE

MIDI Song to Style



The magic begins by dragging and dropping your MIDI file into the application. In Easy mode, the conversion to a Style is automatic. Simply save the result and play the Style on your Arranger Workstation. In Edit mode you can personalize how your Style is created. For example, choose which tracks from the MIDI file should be used in your Style. Specify which regions of the MIDI file are used to make each of the style sections, or even revoice and remix to craft your perfect Style.

The application is free of charge and available for download from www.yamaha.com/2/midisong_to_style



USB Audio



The new USB Audio Interface allows for studio-quality audio to be recorded using the Rec'n'Share app or any DAW with just a single USB cable. Great for sharing your performance with your friends or for high quality music production.

Bluetooth® Audio



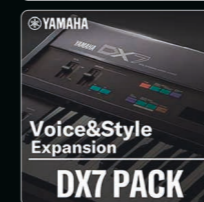
With your Bluetooth® device connected wirelessly to Genos2, you can enjoy to play along with your favorite songs or even record everything you hear, using the onboard audio recorder.

YOUR BENEFITS



Premium Pack

Genos2 includes Expansion memory, which means new Voices and Styles can be added in the future. By simply registering your Genos2, you can download the DX7 Pack, which adds to the preset Voices, completing the collection of 128 original Voices from DX7. In addition to exclusive expansion packs for Genos2, there's already a growing library of free Voice & Style Expansion packs for you to choose from. The packs providing everything from new Voices, Styles, One Touch Settings to Multi-Pads, enabling you to personalize your Genos2's content.



Extended Warranty

Yamaha instruments are designed and meticulously crafted to inspire the player and deliver a lifetime of musical enjoyment. And as a premium brand, we offer a 5-year extended warranty for your new Genos2. To receive the extended warranty just register your instrument.



Bonus Playlists

With these bonus playlists you will have pre-arrange settings in Genos2, ready to play 1000+ songs of all genres.

1000+



flowkey

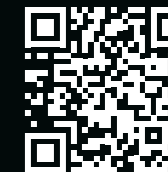
Register and enjoy three months of premium access to flowkey: one of the world's most popular apps for learning to play the piano. It's the ideal companion for all those starting or rediscovering their musical journey. Choose your favourite pieces from a wide range of interactive songs and start playing right away or take advantage of the many tutorials.



CHECK OUT
MORE ABOUT
GENOS2:



REGISTER
NOW TO GET
ALL BENEFITS:



PANEL CONTROLS & TERMINALS



Top Panel

- | | | |
|--------------------------------------|--|--------------------------------|
| 1 [⏻] (Standby/On) switch | 11 [RECORDING] button | 21 REGISTRATION MEMORY buttons |
| 2 [MASTER VOLUME] dial | 12 STYLE CONTROL buttons | 22 ONE TOUCH SETTING buttons |
| 3 [MIC GAIN] knob | 13 CHORD LOOPER buttons | 23 MULTI PAD CONTROL buttons |
| 4 MIC buttons | 14 [TAP TEMPO]/TEMPO buttons | 24 VOICE SELECT buttons |
| 5 UPPER OCTAVE buttons | 15 TRANSPOSE buttons | 25 PART ON/OFF buttons |
| 6 [ART. 1]/[ART. 2]/[ART. 3] buttons | 16 LIVE CONTROL (view/knobs/sliders) | 26 [HARMONY/ARPEGGIO] button |
| 7 Joystick, [JOYSTICK HOLD] button | 17 Touch LCD and related controls | 27 [SUSTAIN] button |
| 8 [PHONES] jack | 18 Gateway buttons | 28 [USB TO DEVICE] terminal |
| 9 Cross Fader | 19 ASSIGNABLE [1]-[3], [A]-[F] buttons | |
| 10 SONG A/SONG B buttons | 20 DIRECT ACCESS button | |

Rear Panel and Bottom

- | | |
|--------------------------------|---|
| 29 Slots | 39 MIC INPUT jack |
| 30 [TO RIGHT SPEAKER] jack | 40 [+48V] switch |
| 31 [HDMI] terminal | 41 AC IN jack |
| 32 [USB TO DEVICE] terminal | 42 [TO LEFT SPEAKER] jack |
| 33 [USB TO HOST] terminal | 43 [USB TO DEVICE] terminal (underneath the instrument) |
| 34 MIDI terminals | |
| 35 [TO SUB WOOFER] terminal | |
| 36 LINE OUT jacks | |
| 37 AUX IN jacks | |
| 38 ASSIGNABLE FOOT PEDAL jacks | |

Specifications

Size/Weight		1,234 mm x 456 mm x 151 mm (48-9/16" x 17-15/16" x 5-15/16")
Dimensions (W x D x H)		
Weight		14.2 kg (31 lb. 5 oz)
Control Interface		
Keyboard	Number of keys	76
	Type	Organ (FSX), Initial Touch/Aftertouch
	Touch Response	Normal, Easy1, Easy2, Soft1, Soft2, Hard1, Hard2
Other Controllers	Joystick	Yes (Assignable)
	Knobs	6 (Assignable, with LED gauge)
	Sliders	9 (Assignable, with LED gauge), Cross Fader
Main Display	Assignable buttons	9 (A-F, 1-3)
	Articulation buttons	ART. 1, ART. 2, ART. 3
	Type	TFT Color Wide VGA LCD
Sub Display	Size	800 x 480 dots, 9 inch
	Touch Screen	Yes
	Language	English, German, French, Spanish, Italian
Panel	Type	VA LCD (LIVE CONTROL View)
	Size	512 x 48 dots
	Language	English
Voices		
Tone Generator		AWM Stereo Sampling, AEM technology, FM
Polyphony (max.)		384 (128 for Preset AWM Voices + 128 for Expansion AWM Voices + 128 for FM Voices)
Preset	Number of Voices	1,991 Voices + 75 Drum/SFX Kits
	Featured Voices	106 S.Articulation2, 437 S.Articulation, 141 FM, 123 MegaVoice, 25 OrganFlutes, 11 Ambient Drums/SFX, 11 Revo Drums/SFX
	Ensemble Voices	95
Compatibility		XG, GM, GM2 (for Song playback)
Keyboard Parts		Right 1, Right 2, Right 3, Left
Effects		
Types	Reverb	85 Preset + 30 User
	Chorus	107 Preset + 30 User
	DSP	Variation: 363 Preset (with VCM) + 30 User, Insertion 1-28: 363 Preset (with VCM) + 30 User
	Master Compressor	5 Preset + 30 User
	Master EQ	9 Preset + 30 User
	Part EQ	28 Parts
	Vocal Harmony	54 Preset + 60 User (*) * The User number represents the total of Vocal Harmony and Synth Vocoder.
	Synth Vocoder	20 Preset + 60 User (*) * The User number represents the total of Vocal Harmony and Synth Vocoder.
Others		Mic Effect: Noise Gate, Compressor, 3 Band EQ, Vocal Effect: 23
Styles		
Preset	Number of Styles	800
	Featured Styles	720 Pro, 69 Session, 11 Free Play
	Fingering	Single Finger, Fingered, Fingered On Bass, Multi Finger, AI Fingered, Full Keyboard, AI Full Keyboard
	Style Control	INTRO x 3, MAIN VARIATION x 4, FILL x 4, BREAK, ENDING x 3
	One Touch Setting (OTS)	4 for each Style
Other Features	Chord Looper	Yes
	Style Section Reset	Yes
Compatibility		Style File Format (SFF), Style File Format GE (SFF GE)
Expandability (Expansion Packs)		
Expansion Voice		Yes (approx. 3 GB)
Expansion Style		Yes (Internal Memory)
Expansion Audio Style		Yes (Internal Memory)
Songs (MIDI)		
Preset	Number of Preset Songs	9 Demo Songs, 1 Preset Song
	Number of tracks	16
Recording	Data capacity	approx. 3 MB per Song
	Function	Quick Recording, Multi Track Recording, Step Recording
Format	Playback	SMF (Format 0, Format 1), XF
	Recording	SMF (Format 0)
Songs (Audio)		
Recording	Data Capacity	approx. 0.8 GB (80 minutes) per Song
	Playback	WAV (44.1 kHz, 16 bit, stereo), MP3 (44.1/48.0 kHz, 64/96/128/256/320 kbps or VBR, mono/stereo)
Format	Recording	WAV (44.1 kHz, 16 bit, stereo)
	Playback (Multi)	.aud (Genos original: 44.1 kHz sample rate, 16 bit resolution, stereo)
Recording (Multi)	.aud (Genos original: 44.1 kHz sample rate, 16 bit resolution, stereo)	
Time Stretch	Yes	
Pitch Shift	Yes	
Vocal Cancel	Yes	

Multi Pads		507 Banks x 4 Pads
Number of Multi Pad Banks		
Audio Link		Yes
Functions		
Voices	Harmony/Echo	Yes
	Arpeggio	Yes
	Panel Sustain	Yes
Styles	Mono/Poly	Yes
	Style Creator	Yes
	OTS Information	Yes
Songs	Score Display function	Yes
	Lyrics Display function	Yes
	Lesson/Guide	Yes
Multi Pads	Multi Pad Creator	Follow Lights, Any Key, Karao-Key, Your Tempo
Registration Memory	Number of buttons	10
Playlist	Control	Registration Sequence, Freeze
Search	Number of Records	2,500 (max.) Records per Playlist file
Search		Yes
Demo		Yes
Overall Controls	Metronome	Yes
	Tempo Range	5 - 500, Tap Tempo
	Transpose	-12 - 0 - +12
	Tuning	414.8 - 440.0 - 466.8 Hz (approx. 0.2 Hz increments)
	Octave button	Yes
	Scale Type	9 Types
Miscellaneous	USB audio interface	44.1 kHz, 32 bit, stereo
	Direct Access	Yes
	Text/Image Display function	Yes
	Wallpaper Customization	Yes
Storage and Connectivity		
Storage		Internal memory (USER Drive) Yes (approx. 15 GB)
External drives		USB Flash drive
Headphones		Standard stereo phone jack (PHONES)
Microphone		Yes (Combo Jack), Phantom Power (+48V) available
MIDI		MIDI A (IN/OUT), MIDI B (IN/OUT)
AUX IN		L/L+R, R, Standard phone jack
LINE OUT		MAIN (L/L+R, R), SUB (1, 2), SUB (3, 4 / AUX OUT), Standard phone jack
Display out		HDMI (1280 x 720p max.)
FOOT PEDAL		1 (SUSTAIN), 2 (ART.1), 3 (VOLUME), function assignable
USB TO DEVICE		Yes (x3)
USB TO HOST		Yes
Connectivity	Wireless LAN	Yes (*) • Standards: IEEE802.11b/g/n (IEEE802.11n 5GHz: not compatible) • Range of transmit frequency (channels): Models for Europe and Brazil: 2401-2483 MHz (channels 1-13) Others: 2401-2473 MHz (channels 1-11) • Maximum RF output power: 14 dBm • Security: WEP, WPA-PSK (TKIP), WPA-PSK (AES), WPA2-PSK (AES), WPA/WPA2 mixed PSK • SAR value: 0.258 W/kg * May not be included, depending on your area. Check with your Yamaha dealer.
	Bluetooth	Yes (*) • Bluetooth version: 5.0 • Compatible codec: SBC • Maximum communication distance: about 10 m • Maximum output power (EIRP): +6.94 dBm • Type of modulation: GFSK, π/4 DQPSK, 8DPSK * May not be included, depending on your area. Check with your Yamaha dealer.
Power Supply		Auto Power Off Yes
Included Accessories		• Owner's Manual • AC power cord • Music Rest, two Music Rest brackets
Separately Sold Accessories (May not be available depending on your area.)		
Option Speaker: GNS-MS01		• Option Speaker: GNS-MS01 • Footswitch: FC4A, FC5 • Wireless MIDI Adaptor: MD-BT01
Optional Stand: L-7B		• Headphones: HPH-50, HPH-100, HPH-150 • Foot Controller: FC7 • Keyboard Stand: L-7B

The contents of this manual apply to the latest specifications as of the publishing date. To obtain the latest manual, access the Yamaha website then download the manual file. Since specifications, equipment or separately sold accessories may not be the same in every locale, please check with your Yamaha dealer.

Options

Optional Speaker: **GNS-MS01**



Optional Stand: **L-7B**



Foot Pedal: **FC4A**
Foot Switch: **FC5**
Foot Controller: **FC7**

Headphones: **HPH-50/HPH-100/HPH-150**
Wireless MIDI Adaptor: **MD-BT01**