



YAMAHA CORPORATION  
P.O.BOX1, Hamamatsu Japan  
[www.yamahaproaudio.com](http://www.yamahaproaudio.com)

\*All specifications are subject to change without notice.  
\*All trademarks and registered trademarks are property of their respective owners.



Printed in Japan



RECORDER  
**POCKETRAK  
PR7**





## Sounding so good has never been this easy

The POCKETRAK PR7 is Yamaha's newest, ultra-portable linear PCM recorder that provides effortless high-quality recordings whenever and wherever you need. Equipped with a newly developed crossed XY stereo microphone, the PR7 captures high-resolution stereo recordings, achieving consistent quality and natural sound. An invaluable tool for any musician, the PR7 offers essential practice functions such as an onboard tuner and metronome, as well as powerful recording functions like overdubbing and marker editing—all easily accessed via a simple, intuitive interface. It even features five optimized presets tailored to a variety of applications, so whether you're rehearsing, songwriting, attending a speaking engagement or making a field recording, achieving studio quality sound has never been so easy.

RECORDER

# POCKETRAK PR7



Crossed XY  
Stereo Mic



24  
bit  
96  
kHz



Rec Preset



Overdubbing



Marker Editing



Tuner &  
Metronome

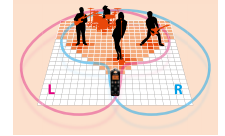


**Capturing the moment  
with high-quality sound**



### Newly Developed Crossed XY Stereo Microphone

The PR7's large onboard XY stereo mics are aligned with the left and right mics on the same axis. Using this configuration, both mics are always equidistant from a sound source, providing perfect localization with no phase shifting. Additionally, the well designed microphone covers enhance the performance of the diaphragm resulting in superb stereo recordings with natural depth and precise stereo imaging.



### 24-bit/96kHz Recording

Linear PCM recording at 24-bit/96kHz far exceeds CD sound quality, allowing users to faithfully capture the atmospheric reverberations and most subtle nuances of a performance. The PR7 can also record in various formats allowing for more lengthy recordings.

### Mic / Line Input

External mic and line inputs can accommodate a variety of external input sources such as condenser microphones or keyboards.



### Rec Presets

The PR7 features five recording presets with optimized HPF and dynamics control settings tailored to the varying requirements of different recording environments. The OFF setting is ideal for capturing musical performances, NEAR is suitable for personal instrument practice, BAND is best suited for multi-instrumental performances, FIELD is best for outdoor recordings and SPEECH is for meetings, seminars or other speaking engagements.



### HPF and Dynamics Control

PR7's HPF settings allow you to minimize the popping noise caused by wind pressure from vocals or outdoor recordings, while dynamics control lets you adjust input levels to avoid distortion.



### Easy Overdubbing

The PR7 comes equipped with a dedicated overdubbing button that allows you to instantly add solo sections, harmonies, or narration to an existing file. You can even punch in and punch out at specific parts of an audio file to ensure that only the parts you need, such as a chorus or a solo, are committed to the file.



### Marker Editing during Recording and Playback

Marker editing is a useful function that allows users to insert up to 36 markers in audio files either during recording or playback, providing easy location of a playback position. Markers can also be used to loop a specific section of a file to aid users in practicing or learning a specific phrase or part of the song.



### Tuner and Metronome

The PR7 features onboard Tuner and Metronome functions that are useful for everyday practice.



### Adjustable Playback Speed

PR7 allows you to adjust playback speed from 50% up to 200% while maintaining consistent pitch throughout. Slower playback can help musicians master more challenging phrases while faster playback allows users to quickly scan through lengthy recordings.

### WaveLab LE Audio Editing Software

WaveLab LE software provides 2-track audio editing with professional EQ and dynamics processing for mastering or enhancing your tracks. You can even upload your audio files to the web using the dedicated podcasting function.

\*Access code for free download included in package



### Pre-recording Function

By continually recording into a three-second memory buffer, the PR7 allows you to start recording a few seconds before you actually press the record button. Never miss those crucial first notes, sounds, or phrases again.

### 29.5 Hours of Battery Life at PCM 16-bit/44.1kHz

Using only a single AAA battery, the PR7 can support continuous recording for approx. 44 hours at MP3 and up to 29.5 hours using the PCM 16-bit/44.1kHz format.



### 2GB Built-in Memory and micro SD/SDHC Card Slot

The PR7 has high-capacity built-in memory so you can start recording right out of the box. It also features a micro SD/SDHC card slot for up to 32GB of storage allowing you to record approximately 50 hours of audio at 16-bit/44.1 kHz.

### Easily Mounted on Tripod

The PR7 can be mounted easily on a standardized tripod to enable more versatility with mic placement options. Mounting on a mic stand is also possible using a simple adapter.

### Built-in Speaker

An onboard speaker allows you to instantly listen to your recording immediately after you've captured it.





# POCKETRAK PR7

# Recording Guide

Mic Setting

Rec Presets

Here are 10 examples of different applications and their recommended recording setting and microphone placement.

## Piano

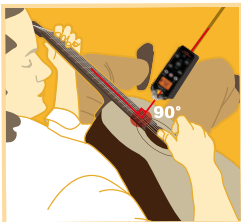
Recommended Rec Preset / OFF



The recommended Rec Preset for recording piano is OFF. Placing the mic just behind, and slightly above the rear curve of the piano to ensure optimal coverage and provide the best balance of highs, mids and lows. For more mic placement versatility, the PR7 can easily be mounted on a mic stand using a standardized adapter.

## Acoustic Guitar

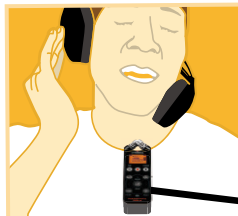
Recommended Rec Preset / NEAR



The recommended Rec Preset for acoustic guitar is NEAR. The microphone should be placed facing the sound hole, in a perpendicular angle to the guitar. For melodic phrases, placing the PR7 closer to the hole will ensure abundant bottom end is realized. For strumming or more percussive parts, moving the PR7 closer to the neck will achieve the best results.

## Vocal

Recommended Rec Preset / NEAR



The recommended Rec Preset for recording vocals is NEAR. The PR7 should be angled upwards towards the vocalist. A standard windscreens can also help minimize unwanted noise or popping that can be generated from breathing or powerful vocal passages.

## Brass

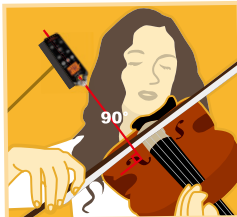
Recommended Rec Preset / NEAR



The recommended Rec Preset for recording brass is NEAR. As with vocal recordings, mic placement directly in front of the horn should be avoided in order to minimize pressure on the mic that can cause popping noise. You can even use an everyday music stand for optimal mic placement.

## Strings

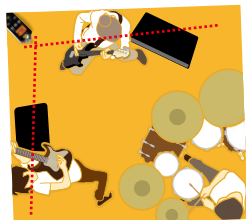
Recommended Rec Preset / OFF



The recommended Rec Preset for recording strings is OFF. Placing the mic directly facing an f-hole will produce a rich bottom end, while placement slightly away from it will give recordings a more clear, sharper tone. The PR7 can easily be mounted on a mic stand using a standardized adapter, allowing for more precise mic placement.

## Band Rehearsal

Recommended Rec Preset / **BAND**



The recommended Rec Preset for recording a band is BAND. Placing the PR7 directly opposite the loudest sound source and at an angle that covers all instruments or amplifiers will achieve the best results for band recordings.

## Orchestra / Choir

Recommended Rec Preset / **OFF**



The recommended Rec Preset for live, acoustic performances with multiple performers is OFF. The PR7 should be placed in front of the stage with all performers and instruments within the coverage area.

## Live Performance

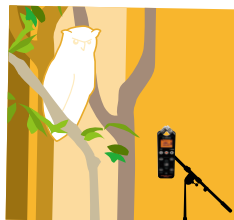
Recommended Rec Preset / **BAND**



The recommended Rec Preset for recording live performances with sound reinforcement is BAND. The PR7 should be placed in front of the stage with L and R PA speakers within the coverage area.

## Field Recording

Recommended Rec Preset / **FIELD**



The recommended Rec Preset for field recordings is FIELD. When recording subtle, low volume nature sounds, setting the REC level to more than 30 is recommended, while setting the REC level around 20 will ensure a clearer recordings when capturing louder sound sources such as a train or airplane. Outdoor recordings can also benefit from attaching a standard windscreen.

## Meeting

Recommended Rec Preset / **SPEECH**



The recommended Rec Preset for recording meetings is SPEECH. The PR7 should be placed at an angle that includes all speaking attendees in the coverage area. Selecting the SPEECH setting automatically enables ALC HIGH in order to balance all input levels regardless of distance from the PR7.

Each new environment comes with a different set of recording demands. By taking advantage of manual HPF and dynamic control settings or experimenting with different mic placements, you can further customize your recording setup to get the best performance out of your PR7.



# REC, REFINE and SHARE!

With high-resolution studio quality recordings this good, you're giving you the tools necessary to edit and master your recordings

not going to want to keep them to yourself. WaveLab LE lets you edit, master and ultimately share them with your intended audience.

## Step 1

### Recording

Whether you're recording a rehearsal for your band mates or laying down tracks for an original composition, you want the best possible quality for your initial recording. Just choose the mic placement and recording preset that suits you best and the PR7 will do the rest.

#### ▶ Band Rehearsal



#### ▶ Songwriting



## Step 2

### Audio Editing



#### 1 Download

You can download WaveLab LE from the website below, using the access code included in the package.

<http://www.yamaha-proaudio.com/pr7/>



#### 2 Import files

Connect the PR7 to your computer with WaveLab LE installed and import your recorded files.



#### 3 Audio Editing

With WaveLab LE, you can make standard edits to your recorded files such as trimming, splitting, copy and paste, or adding a fade in or out. WaveLab LE also comes equipped with comprehensive set of Steinberg's professional plug-ins, such as Compressor, Limiter and StudioEQ, that will brush up and enhance your recordings.

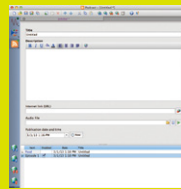


## Step 3

### Sharing

#### Podcasting

With the WaveLab LE podcasting function, you can easily post your work online adding a title and description. You can also create several episodes and upload them directly to the server of your choice.



▲ Podcast Workspace

#### Sharing data

You can also share your completed WaveLab files via e-mail or burn them to a CD.



## ■ Specifications

Recording Format	WAV (Quantization: 16/24-bit, Sampling frequency: 44.1/48/88.2/96kHz) MP3 (Bit rate: 32/64/128/192/320kbps)	
Playback Format	WAV (Quantization: 16/24-bit, Sampling frequency: 44.1/48/88.2/96kHz) MP3 (Bit rate: 16-320kbps) WMA (Bit rate: 32-192kbps)	
Built-in Memory	2GB	
External Memory	micro SD card (16MB-2GB), micro SDHC card (4GB-32GB)	
Functions	Overdubbing, Rec preset(OFF/NEAR/BAND/SPEECH/FIELD), Marker Editing, Tuner, Metronome, PRC(Pre recording), HPF(ON/OFF), Dynamics control(OFF/LIM*/ALC** HI/ALC LO), Mic input sensitivity select (ALC OFF: 60 steps, ALC ON: 2 steps) *LIM=Limiter, **ALC=Auto Level Control	
Playback Speed	50% - 200% (exception : 50% - 150% @PCM 96/88.2kHz)	
Built-in Mic	Uni-directional condenser microphone, stereo, XY-type	
Mic / Line Input	1/8"(ø3.5mm) stereo mini phone jack (plug-in power supported)	
Phone / Line Output	1/8"(ø3.5mm) stereo mini phone jack	
Others	Internal Speaker microSD card slot x 1	
USB	Connector/Format	Mini-B type, USB 2.0 High Speed (1500 kbps), Mass storage class
Battery	Available Battery	AAA alkaline battery or AAA NiMH battery x 1
Recording	Battery Life	MP3(64kbps): approx. 44 hours, PCM(16bit/44.1kHz): approx. 29 hours 30 minutes
Playback	Battery Life (Headphone)	MP3(64kbps): approx. 30 hours, PCM(16bit/44.1kHz): approx. 22 hours 30 minutes
Dimensions ( W x H x D )		
Approx. 46.6(W) x 132.1(H) x 28.7(D) mm		
Weight		
Approx. 82g (including battery)		
Accessories		
USB cable x1, AAA alkaline battery x1		

## ■ Estimated available recording time (with internal 2GB memory)

PCM	24bit	96kHz	Approx. 55 minutes
PCM	16bit	44.1kHz	Approx. 2 hours 55 minutes
MP3	320kbps		Approx. 12 hours 45minutes
MP3	128kbps		Approx. 32 hours
MP3	64kbps		Approx. 64 hours

