

Specifications

XENO Trombones

*1 Slide Material (Outer/Inner); Y=Yellow brass, N=Nickel silver, G=Gold brass

Model	Key	Bore Size	Slide Material*1	Bell Diameter	Bell Material	Weight	Finish	Mouthpiece Shank	Mouthpiece	Case	Page
YSL-881	B♭	L: 13.89mm (.547")	Y/N	220.0mm (8 2/3")	Yellow brass	Heavy	Clear lacquer	Large	SULLIVAN	SLC-88U	2
YSL-881G					Gold brass						
YSL-882O	B♭/F	L: 13.89mm (.547")	Y/N	220.0mm (8 2/3")	Yellow brass	Heavy	Clear lacquer	Large	SULLIVAN	SLC-88U	3
YSL-882GO					Gold brass						

Professional Trombones

YSL-610	B♭	L: 13.89mm (.547")	Y/N	214.4mm (8 1/2")	Yellow brass	Standard	Gold lacquer	Large	48L	SLC-410	4
YSL-630		ML: 13.34mm (.525")						Small	48		
YSL-620	B♭/F	L: 13.89mm (.547")	Y/N	214.4mm (8 1/2")	Yellow brass	Standard	Gold lacquer	Large	48L	SLC-410	4
YSL-640		ML: 13.34mm (.525")						Small	48		

Professional Jazz Trombones

YSL-697Z	B♭	Dual: 12.29-12.45mm (.484-.490")	Y/N	190.4mm (7 1/2")	Yellow brass	Standard	Gold lacquer	Small	46C2	SLC-690	5
YSL-691		M: 12.9mm (.508")	N/N	204.4mm (8")		Light			45C2		

Intermediate Trombones

YSL-445G	B♭	ML: 13.34mm (.525")	N/N	214.4mm (8 1/2")	Gold brass	Standard	Gold lacquer	Small	48	SLC-210	6
YSL-447G		L: 13.89mm (.547")						Large	48L		
YSL-446G	B♭/F	ML: 13.34mm (.525")	N/N	214.4mm (8 1/2")	Gold brass	Standard	Gold lacquer	Small	48	SLC-210	6
YSL-448G		L: 13.89mm (.547")						Large	48L		

Standard Trombones

*2 Silver-plated finished available.

YSL-354/S	B♭	M: 12.7mm (.500")	N/N	204.4mm (8")	Yellow brass	Standard	Gold lacquer*2	Small	48	SLC-200	7
YSL-356G	B♭/F	Dual: 12.7-13.34mm (.500-.525")			Gold brass		Gold lacquer			SLC-210	

Standard Compact Trombone

YSL-350C	B♭/C	Dual: 12.7-13.34mm (.500-.525")	Y/N	204.4mm (8")	Gold brass	Standard	Gold lacquer	Small	48	SLC-220	8
----------	------	---------------------------------	-----	--------------	------------	----------	--------------	-------	----	---------	---

Professional Alto Trombone

*3 With 1/2 step trill valve (YSL-671T).

YSL-671/T*3	E♭ Alto	Dual: 11.95-12.45mm (.470-.490")	Y/N	181.8mm (7 1/8")	Yellow brass	Standard	Gold lacquer	Small	48A	SLC-871II	9
-------------	---------	----------------------------------	-----	------------------	--------------	----------	--------------	-------	-----	-----------	---

Standard Valve Trombones

YSL-354V	B♭	M: 12.7mm (.500")	N/—	204.4mm (8")	Yellow brass	Standard	Gold lacquer	Small	48	SLC-35V	9
YSL-354VC	C										

XENO Bass Trombones

*4 Gold brass bell is also available by special order.

YBL-830	B♭/E/D/G♯	LL: 14.3mm (.563")	Y/N	241.0mm (9 1/2")	Yellow brass*4	Heavy	Clear lacquer	Large	59L	BLC-830	10
YBL-822G	B♭/F & B♭/F/D	LL: 14.3mm (.563")			Gold brass				YEO	BLC-822	

Professional Bass Trombone

YBL-620G	B♭/E/B♭ & B♭/F/D	LL: 14.3mm (.563")	N/N	241.0mm (9 1/2")	Gold brass	Standard	Gold lacquer	Large	58L	BLC-60	11
----------	------------------	--------------------	-----	------------------	------------	----------	--------------	-------	-----	--------	----

Intermediate Bass Trombone

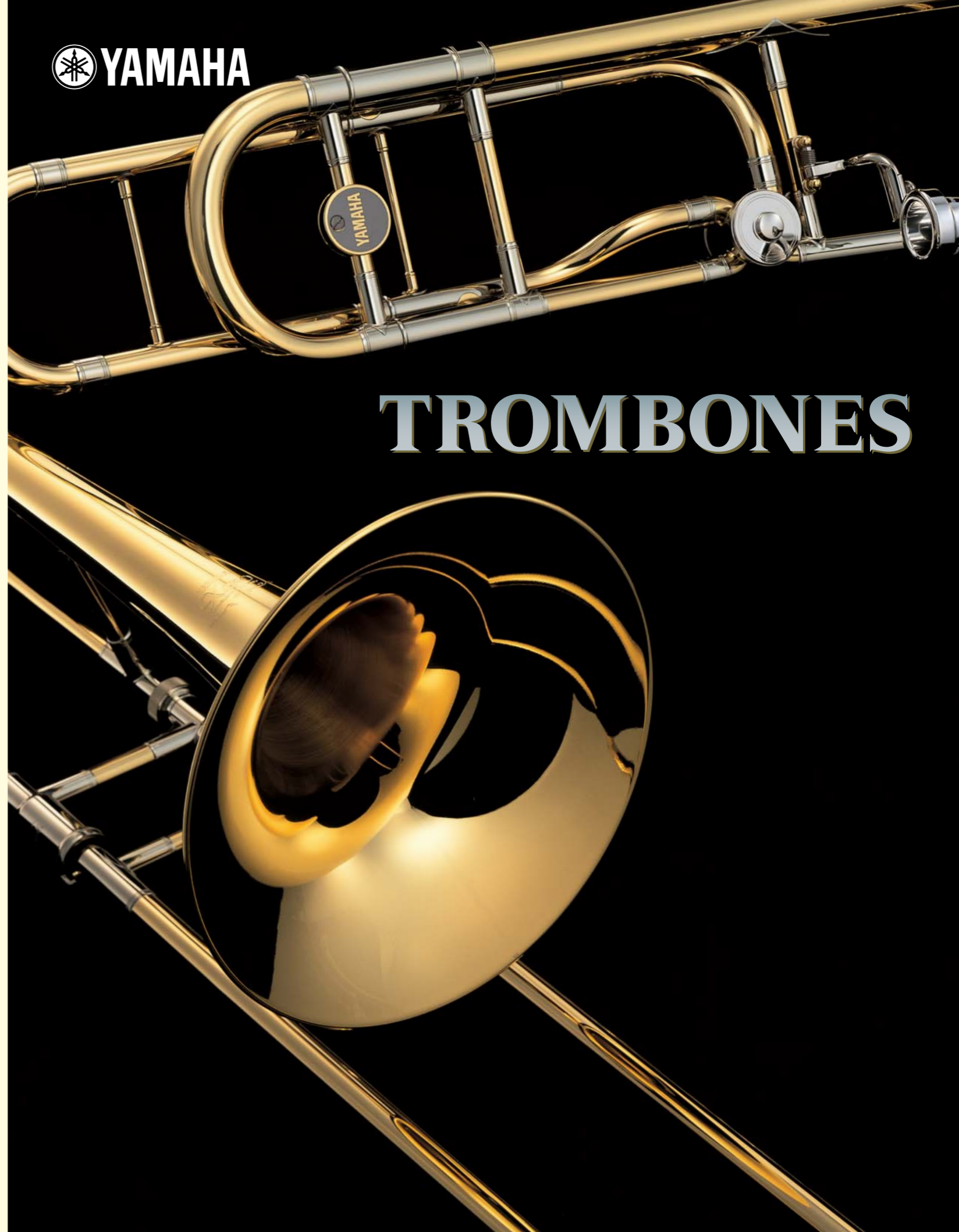
YBL-421G	B♭/F	LL: 14.3mm (.563")	N/N	241.0mm (9 1/2")	Gold brass	Standard	Clear lacquer	Large	58L	BLC-320	11
----------	------	--------------------	-----	------------------	------------	----------	---------------	-------	-----	---------	----

Professional German Style Trombones

YSL-603	B♭/F	Dual: 13.0-13.59mm (.512-.535")	G/N	223.6mm (8 4/5")	Gold brass	Standard	Clear lacquer	Small	48	SLC-603	12
YBL-605	B♭/F/D/G♯	Dual: 13.89-14.3mm (.547-.563")	N/N	256.0mm (10")				Large	59L	BLC-605	13

•All specifications are subject to change without notice.

For details please contact:



TROMBONES



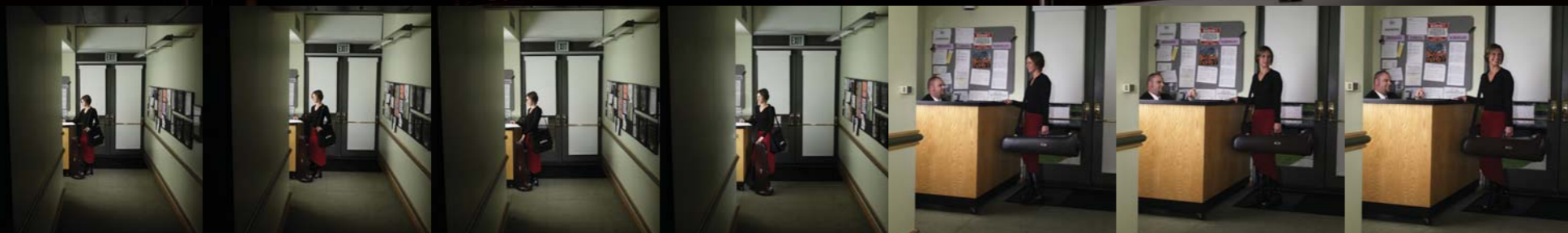
Head Office: EC00J0249 ISO 9001 Certified
 Toyooka Plant: EC00J0045 JQA-QM6245
 Saitama Plant: EC99J1065

<http://www.yamaha.co.jp/english/product/winds/>



W-232R2 | 017501B Printed in Japan





“I FEEL LUCKY...”

“Things are going my way. Most of my friends are looking for jobs, but I’m booked solid. And one big reason is the new Xeno. When a lot of guys are hungry for the same gig it helps to have an advantage. And that’s just what my Xeno is.

“I started trombone on a Yamaha student model. I really liked it and used it right up into high school, long after most of my friends had already moved up to pro models. It was just a student model but it sure worked for me.

“Then I decided that playing trombone was what I wanted to do with my life. I got a serious teacher, practiced hard, and eventually bought one of those brands I was told most pros use. I kept playing it through college, even though it never really felt 100% right for me.

“But then I played extra with the local orchestra where all the guys were using Xenos. I only needed to try one for a few minutes before I knew I’d found my real trombone voice. Now I’m a member of that orchestra and am back on Yamaha. I can’t figure out why I ever left.”

Contents

Xeno Series	2
Professional Models	4
Professional Jazz Models	5
Intermediate Models	6
Standard Models	7
Compact Trombone	8
Alto Trombone	9
Valve Trombone	9
Bass Trombones	10
German Style Trombones	12
Mouthpieces	14
Artist Quotes	16
Silent Brass Systems	17
Maintenance Materials	17

Yamaha is the only manufacturer to produce a complete lineup of top quality trombones; from alto to bass, from entry level student models to state-of-the-art Custom models. And all our trombones—even the most inexpensive student models—are produced in Yamaha’s own workshops under the direct supervision of the designers themselves for unparalleled quality and consistency.



Xeno Trombones



The Ultimate Orchestral Style Trombone Has Arrived

The rumors were floating around for years: there was a great 'heavy-style' trombone available in Japan, and in Japan only. The only ones who had ever seen it were musicians touring in Japan. It was called the Xeno and a lot of those players really liked it. They liked it so much, in fact, that they kept asking, "Why not offer it outside Japan?" But we weren't ready—the Xeno wasn't ready; we were still working on it, perfecting it day by day. But now it's ready! Now the Xeno is being offered to the world.

The Xeno features heavier gauge brass and a thick-walled, one-piece brazed bell which has been hand-hammered thousands of times for the ultimate in a big orchestral sound. The open-wrap F section gives a free-blowing response and the entire instrument has an evenness and balance you have to experience to believe. The tone is flexible with myriad tonal colors, and gives you both powerful projection at fortissimo and subtle control in the most delicate passages. This may well be the most expressive orchestral style trombone ever created.

The Xeno was created in close collaboration with some of the world's best trombonists. Thomas Horch of the Bavarian Radio Orchestra, Peter Sullivan of the Pittsburgh Symphony, and Alain Trudel soloist, extraordinaire, have all contributed their talent and expertise to developing the Xeno.



YSL-881

Xeno YSL-881

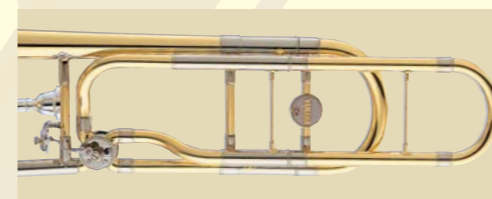
Key: B \flat
Bore: L: 13.89mm (0.547")
Bell: Yellow-brass, 220.0mm (8 2/3")
Weight: Heavy
Outer slide: Yellow brass
Inner slide: Nickel silver
Finish: Clear lacquer
Mouthpiece: SULLIVAN (Large shank)
Case: SLC-88U



YSL-882O

Xeno YSL-882O

Key: B \flat /F
Bore: L: 13.89mm (0.547")
Bell: Yellow-brass, 220.0mm (8 2/3")
Weight: Heavy
Outer slide: Yellow brass
Inner slide: Nickel silver
Finish: Clear lacquer
Mouthpiece: SULLIVAN (Large shank)
Case: SLC-88U



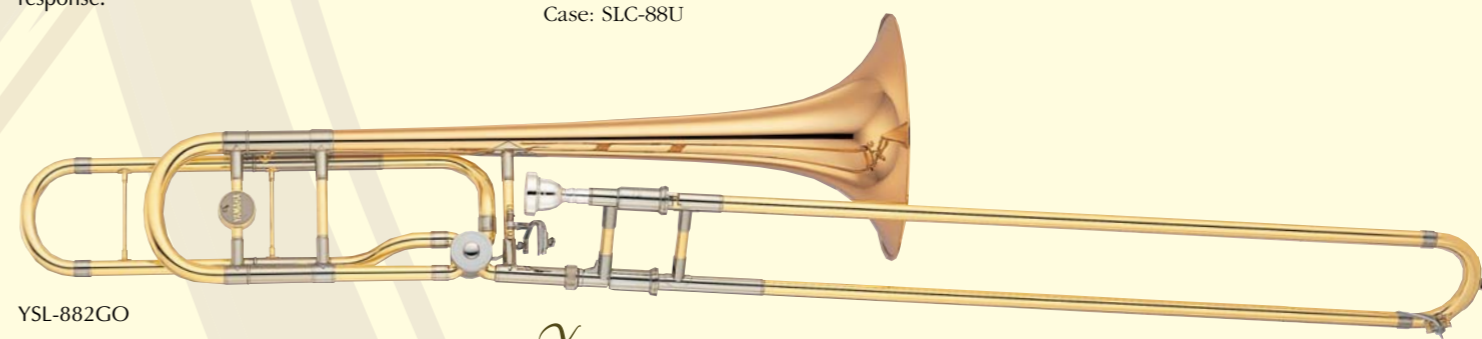
The open-wrap F section provides a free-blowing response.



YSL-881G

Xeno YSL-881G

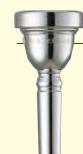
Key: B \flat
Bore: L: 13.89mm (0.547")
Bell: Gold-brass, 220.0mm (8 2/3")
Weight: Heavy
Outer slide: Yellow brass
Inner slide: Nickel silver
Finish: Clear lacquer
Mouthpiece: SULLIVAN (Large shank)
Case: SLC-88U



YSL-882GO

Xeno YSL-882GO

Key: B \flat /F
Bore: L: 13.89mm (0.547")
Bell: Gold-brass, 220.0mm (8 2/3")
Weight: Heavy
Outer slide: Yellow brass
Inner slide: Nickel silver
Finish: Clear lacquer
Mouthpiece: SULLIVAN (Large shank)
Case: SLC-88U



Peter Sullivan Mouthpiece

Principal trombonist of the Pittsburgh Symphony, Peter Sullivan was one of the Xeno design consultants and his mouthpiece is perfectly suited for use with the Xeno.



Case (SLC-88U)

Xeno trombones come in deluxe cases which provide excellent protection.

Professional Models



Yamaha Professional model trombones have long been popular thanks to their quick and agile response, highly accurate intonation, and rich warm tone. The new 600 series have kept all these fine qualities, while adding some design features from our top of the line Xeno trombones. Their broad sound has a well defined tonal core for excellent projection in all registers at any dynamics. The series offers two different bore sizes to meet individual playing needs: the 610 and 620 feature a large bore for strong orchestral style performance, while the 630 and 640 have a medium-large bore for versatility in all musical genres. All models feature two-piece hand-hammered bells for a quick response while their narrow style slide and medium weight construction provide exceptional playing flexibility.



YSL-630

Professional

YSL-610

Key: B^b
 Bore: L: 13.89mm (0.547")
 Bell: Yellow-brass, 214.4mm (8 1/2")
 Weight: Standard
 Outer slide: Yellow brass
 Inner slide: Nickel silver
 Finish: Gold lacquer
 Mouthpiece: 48L (Large shank)
 Case: SLC-410

Professional

YSL-630

Key: B^b
 Bore: ML: 13.34mm (0.525")
 Bell: Yellow-brass, 214.4mm (8 1/2")
 Weight: Standard
 Outer slide: Yellow brass
 Inner slide: Nickel silver
 Finish: Gold lacquer
 Mouthpiece: 48 (Small shank)
 Case: SLC-410



SLC-410



YSL-620

Professional

YSL-620

Key: B^b/F
 Bore: L: 13.89mm (0.547")
 Bell: Yellow-brass, 214.4mm (8 1/2")
 Weight: Standard
 Outer slide: Yellow brass
 Inner slide: Nickel silver
 Finish: Gold lacquer
 Mouthpiece: 48L (Large shank)
 Case: SLC-410

Professional

YSL-640

Key: B^b/F
 Bore: ML: 13.34mm (0.525")
 Bell: Yellow-brass, 214.4mm (8 1/2")
 Weight: Standard
 Outer slide: Yellow brass
 Inner slide: Nickel silver
 Finish: Gold lacquer
 Mouthpiece: 48 (Small shank)
 Case: SLC-410



SLC-410

Professional Jazz Models



The 'Z' is a lead trombone with a multi-dimensional sound that's perfect for a wide spectrum of playing styles and situations. It has a sweet sound when you want it, brilliance or bite when you need it, records beautifully, and has great projection for solos. And there's a beautiful 'sheen' in the tone when using slide vibrato which you just can't find on most other modern horns. And the Z speaks immediately—probably faster than any trombone you've ever tried. When playing very fast phrases, the clarity of each note is outstanding. The bell is of a special new alloy and is thinner and lighter for a quicker response. The dual bore slide has the closest tolerances on the market for an ultra-tight air seal, yet thanks to the tapered inner slide stockings provides very quick and smooth action.



YSL-697Z

Professional

YSL-697Z

Key: B^b
 Bore: Dual: 12.29-12.45mm (0.484-0.490")
 Bell: Yellow-brass, 190.4mm (7 1/2")
 Weight: Standard
 Outer slide: Yellow brass
 Inner slide: Nickel silver
 Finish: Gold lacquer
 Mouthpiece: 46C2 (Small shank)
 Case: SLC-690

The Z trombone was developed in partnership with the talented Canadian jazz and classical trombonist Al Kay.



SLC-690



YSL-691

Professional

YSL-691

Key: B^b
 Bore: M: 12.9mm (0.508")
 Bell: Yellow-brass, 204.4mm (8")
 Weight: Light
 Outer slide: Yellow brass
 Inner slide: Nickel silver
 Finish: Gold lacquer
 Mouthpiece: 45C2 (Small shank)
 Case: SLC-69M

The YSL-691, which features a quick, nimble response and a clear yet colorful tone, is one of the world's most popular jazz trombones. It offers a larger bell and bore size for players who want the flexibility of a small trombone but with a deeper, richer sound. The 691 was used by one of the world's greatest jazz trombonists, and we have preserved the same specifications throughout the years—making this horn a 'living classic'.



SLC-69M

Intermediate Models



Beginning to outgrow your student model instrument? Try stepping up to a Yamaha intermediate model. They offer, for a surprisingly affordable price, many professional qualities, including a beautiful rich tone, a bigger sound, easy playability, and a really balanced response. They feature pro-sized bores and bells, and the kind of handcrafted assembly which you would normally expect only with a top-of-the-line trombone. The two-piece 8-1/2" bell is made of gold brass for a warm, rich sound which can fill a concert hall, and the intonation is very accurate. The YSL-445G and 446G are medium-large bore models for versatility in almost any playing situation, while the 447G and 448G offer a large orchestral bore for powerful sound projection. The YSL-446G and 448G feature Yamaha's original wrap for the F-attachment for an open, free-blowing response.



YSL-445G

Intermediate

YSL-445G

Key: B \flat
 Bore: ML: 13.34mm (0.525")
 Bell: Gold-brass, 214.4mm (8 1/2")
 Weight: Standard
 Outer slide: Nickel silver
 Inner slide: Nickel silver
 Finish: Gold lacquer
 Mouthpiece: 48 (Small shank)
 Case: SLC-210

Intermediate

YSL-447G

Key: B \flat
 Bore: L: 13.89mm (0.547")
 Bell: Gold-brass, 214.4mm (8 1/2")
 Weight: Standard
 Outer slide: Nickel silver
 Inner slide: Nickel silver
 Finish: Gold lacquer
 Mouthpiece: 48L (Large shank)
 Case: SLC-210



SLC-210



YSL-448G

Intermediate

YSL-446G

Key: B \flat /F
 Bore: ML: 13.34mm (0.525")
 Bell: Gold-brass, 214.4mm (8 1/2")
 Weight: Standard
 Outer slide: Nickel silver
 Inner slide: Nickel silver
 Finish: Gold lacquer
 Mouthpiece: 48 (Small shank)
 Case: SLC-210

Intermediate

YSL-448G

Key: B \flat /F
 Bore: L: 13.89mm (0.547")
 Bell: Gold-brass, 214.4mm (8 1/2")
 Weight: Standard
 Outer slide: Nickel silver
 Inner slide: Nickel silver
 Finish: Gold lacquer
 Mouthpiece: 48L (Large shank)
 Case: SLC-210



SLC-210

Standard Models



Yamaha standard trombones were designed to make it easier for beginning students to sound good...and as soon as possible. They are produced in Yamaha workshops by highly trained craftspeople with very similar specifications and manufacturing processes as we use on our top of the line models. And every single instrument is stringently test-played and inspected by an expert. This is why some top artists have commented that Yamaha standard models are very close to pro trombones in quality, yet are much easier for beginners to play. The standard models are durable, high quality trombones which offer a perfect entry into the world of music.



YSL-354

Standard

YSL-354

Key: B \flat
 Bore: M: 12.7mm (0.500")
 Bell: Yellow-brass, 204.4mm (8")
 Weight: Standard
 Outer slide: Nickel silver
 Inner slide: Nickel silver
 Finish: Gold lacquer (Silver-plated finished available)
 Mouthpiece: 48 (Small shank)
 Case: SLC-200



SLC-200



YSL-356G

Standard

YSL-356G

Key: B \flat /F
 Bore: Dual: 12.7-13.34mm (0.500"-0.525")
 Bell: Gold-brass, 204.4mm (8")
 Weight: Standard
 Outer slide: Nickel silver
 Inner slide: Nickel silver
 Finish: Gold lacquer
 Mouthpiece: 48 (Small shank)
 Case: SLC-210



SLC-210

Compact Model



Many children are fascinated by the trombone. It has a strong and pleasing tone which can slide smoothly from note to note, and it's visually exciting—it looks fun! But unlike most other instruments, the trombone cannot be played by small children. Modern trombones were designed for adults, and many would-be beginners just can't stretch their arms far enough to play all the slide positions. That's why we created the Yamaha 350C. This is a full-sized trombone, using the traditional slide positions, but it's much shorter in length. With the 350C, you can play a full scale without using the two farthest positions!



YSL-350C

Standard

YSL-350C

Key: B \flat /C
 Bore: Dual: 12.7-13.34mm (0.500-0.525")
 Bell: Gold-brass, 204.4mm (8")
 Weight: Standard
 Outer slide: Yellow brass
 Inner slide: Nickel silver
 Finish: Gold lacquer
 Mouthpiece: 48 (Small shank)
 Case: SLC-220



The 350C features a unique adjustable thumb button and finger ring to accommodate different sized hands—from small children to adults.

Not Only for Kids

The 350C is not only for small children; it is also suitable for adults. Your child won't outgrow the instrument—you won't need to buy a 'bigger' model.

Big Sound

The 8 inch bell is full-sized—the same as on our standard trombones—and made of gold brass for an exceptionally warm and round tone.

How it Works

The secret of this revolutionary design is the ascending valve. When played 'open' the trombone uses the full length of B \flat tubing. When the lever is pressed the key of the instrument ascends a step, which eliminates the need for 6th and 7th slide positions.

Easy to Use

Conventional trombones are long, awkward instruments. The 350C is not only shorter, but has considerably improved balance, making it easier and more comfortable to hold.



SLC-220

Playing Positions

All 'slide to bell' positions are the same as on traditional trombones. L1, L2 indicate using the valve while playing position 1 or 2.

*Indicates that the slide should be positioned slightly higher (closer to the mouthpiece) than usual.

Alto Trombones



The YSL-671 alto trombone has gained a formidable reputation as the preferred instrument of many of the world's leading soloists. Characterized by a clear, elegant tone and superb playability, it features a dual bore design for improved response and intonation. The slide positions are similar to those of tenor trombones, making it easier for players switching back and forth.



YSL-671

Professional

YSL-671

Key: E \flat
 Bore: Dual: 11.95-12.45mm (0.470-0.490")
 Bell: Yellow-brass, 181.8mm (7 1/8")
 Weight: Standard
 Outer slide: Yellow brass
 Inner slide: Nickel silver
 Finish: Gold lacquer
 Mouthpiece: 48A (Small shank)
 Case: SLC-871III
 An optional trill valve is available to facilitate ornamentation (YSL-671T).



SLC-871III

Valve Trombones

Yamaha's Standard model valve trombone provides the rich noble tone of a trombone, but with the quick clean action of piston valves for those unfamiliar with slide positions.



YSL-354V

Standard

YSL-354V

Key: B \flat
 Bore: M: 12.7mm (0.500")
 Bell: Yellow-brass, 204.4mm (8")
 Weight: Standard
 Slide material: Nickel silver
 Finish: Gold lacquer
 Mouthpiece: 48 (Small shank)
 Case: SLC-35V



YSL-354VC valve trombone in C is also available by special order.



SLC-35V

Xeno Bass Trombones



Yamaha's Xeno Trombones can be found in many of the world's top orchestras. They offer powerful tonal projection; yet provide a warm sound with rich harmonics other trombones just can't produce. And for years, players have been awaiting the launch of an equally good Xeno Bass Trombone. They need wait no longer. The new Xeno models are here and they exceed all expectations.



YBL-830

Xeno YBL-830

Key: B \flat /F/D/G \flat
 Bore: LL: 14.3mm (0.563")
 Bell: Yellow brass, 241.0mm (9 1/2")
 Tuning slide: Yellow brass
 Weight: Heavy
 Outer slide: Yellow brass
 Inner slide: Nickel silver
 Finish: Clear lacquer
 Mouthpiece: 59L (Large shank)
 Case: BLC-830

*Gold brass bell is also available by special order.

In-line Valve System

Yamaha combined the knowledge they learned in creating the Xeno tenor trombones with feedback from some of the world's great bass trombonists; including years of on-stage testing. The results speak for themselves, a state of the art bass trombone with all specifications redesigned by an elite team of Yamaha designers and R&D experts. The 830 model includes features such as the newly designed yellow brass bell with a thinner wall for enhanced response, nickel silver slide crook for more substance to the sound, and a new rotor design which improves playability.



BLC-830

Xeno Bass Trombones come in deluxe case with shoulder straps which provide excellent protection. (BLC-830, BLC-822)



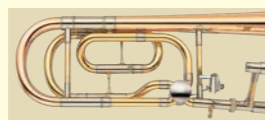
YBL-822G

Xeno YBL-822G

Key: B \flat /F & B \flat /F/D
 Bore: LL: 14.3mm (0.563")
 Bell: Gold-brass, 241.0mm (9 1/2")
 Tuning slide: Gold-brass
 Weight: Heavy
 Outer slide: Yellow brass
 Inner slide: Nickel silver
 Finish: Clear lacquer
 Mouthpiece: YEO signature model (Large shank)
 Case: BLC-822

Offset Valve System (with Removable 2nd Valve)

This model is a refined version of the very successful YBL-622 and like its predecessor was developed with the great artist Douglas Yeo of the Boston Symphony. There have been many small technical improvements, but the results are far from small. The sound from the gold-brass bell is even warmer, the valve register more responsive, and the overall playability more flexible.



Much of the literature can be played using a single valve, so the 822G offers a detachable 2nd valve section.



YEO signature model



BLC-822

Professional & Intermediate Model Bass Trombones



The YBL-620G and YBL-421G models were designed based on the basic specifications of the Xeno models, but have two-piece bells and hydro pressure formed tuning crooks for a more affordable price. Their medium weight construction provides players with a very quick and efficient response, making these models versatile in a variety of musical genres. Both feature a 9 1/2 inch bell of gold brass for a warm and rich sound.



YBL-620G

Professional

YBL-620G

Key: B \flat /F/E \flat & B \flat /F/D
 Bore: LL: 14.3mm (0.563")
 Bell: Gold-brass, 241.0mm (9 1/2")
 Weight: Standard
 Outer slide: Nickel silver
 Inner slide: Nickel silver
 Finish: Gold lacquer
 Mouthpiece: 58L (Large shank)
 Case: BLC-60
 D slide included

The YBL-620G features a dark rich tone with powerful projection. The outer slide is nickel-silver for durability and the valves are in an offset configuration. This model is lighter than the others, making it easier to hold and giving it a very quick response.



BLC-60



YBL-421G

Intermediate

YBL-421G

Key: B \flat /F
 Bore: LL: 14.3mm (0.563")
 Bell: Gold-brass, 241.0mm (9 1/2")
 Weight finish: Standard
 Outer slide: Nickel silver
 Inner slide: Nickel silver
 Finish: Clear lacquer
 Mouthpiece: 58L (Large shank)
 Case: BLC-320

Yamaha's Intermediate 421G model bass trombone features many of the qualities of our top pro models, yet is available at a very affordable price. It has the same bell and bore size as most pro models, and the bell is gold-brass for a sound both rich and full.



BLC-320

German Style Trombones



The YSL-603, which has been developed in close cooperation with one of Germany's leading trombonists, is a traditional German style trombone, but has a slide/bell configuration identical to a conventional trombone, allowing players to switch back and forth between them. It has a beautiful rich, warm sound which is ideal for Germanic style pieces. Just as rotary trumpets can give a more authentic sound to an orchestra in certain works, these trombones can give a new and beautiful sound to any section. The 603 features a removable F attachment.

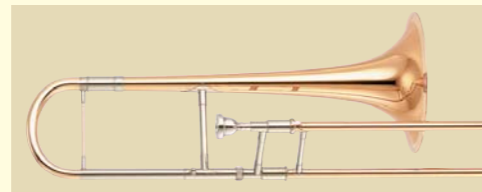


YSL-603

Professional

YSL-603

Key: B^b/F
 Bore: Dual: 13.0-13.59mm (0.512-0.535")
 Bell: Gold-brass, 223.6mm (8 4/5")
 Weight: Standard
 Outer slide: Gold brass
 Inner slide: Nickel silver
 Finish: Clear lacquer
 Mouthpiece: 48 (Small shank)
 Case: SLC-603



YSL-603 shown without removable F-attachment



SLC-603



YBL-605

Professional

YBL-605

Key: B^b/F/D/G^b
 Bore: Dual: 13.89-14.3mm (0.547-0.563")
 Bell: Gold-brass, 256mm (10")
 Weight: Standard
 Outer slide: Nickel silver
 Inner slide: Nickel silver
 Finish: Clear lacquer
 Mouthpiece: 59L (Large shank)
 Case: BLC-605

The YBL-605 is a traditional German style bass trombone, but as with the 603 it has a slide/bell positioning identical to conventional bass trombones, allowing players to switch back and forth without having to alter their positioning.



BLC-605

Yamaha Trombone Mouthpieces

All Yamaha brass mouthpieces have been designed in cooperation with the world's top players, and are produced on space-age computer lathes which virtually guarantee that every single mouthpiece of the same number will play, sound and feel precisely the same. We offer three different series to suit any playing requirements.

Standard Series Mouthpieces

Our Standard series mouthpieces feature smooth attack, secure control, and easy playability.

GP Series Mouthpieces

The rim, cup, and inner bore are gold-plated for superior projection and smooth response.

Small Shank

Model No.	Inner Diameter	Contour	Thickness	Cup Depth	Throat	Backbore	Approximate Size Equivalent
45A	24.26 mm	standard	standard	shallow	5.85 mm	semi-narrow	Bach 12E
45C2-12C	24.26 mm	semi-round	standard	standard	5.85 mm	semi-narrow	Bach 12C
46B	24.58 mm	standard	standard	semi-shallow	5.85 mm	semi-narrow	Bach 11C rim, shallower cup
46C2	24.59 mm	semi-round	standard	standard	5.85 mm	semi-narrow	Bach 11C
47	24.98 mm	standard	standard	standard	5.85 mm	semi-narrow	Bach 6 3/4 C, Schilke 47
48A	25.25 mm	standard	standard	shallow	5.32 mm	semi-narrow	Bach 6 1/2 rim, shallower cup
48	25.25 mm	standard	medium	medium	6.62 mm	semi-wide	Bach 6 1/2 AL, Denis Wick 6BS
48D	25.25 mm	standard	standard	semi-deep	6.62 mm	semi-wide	Bach 6 1/2 AL rim, deeper cup
51B	25.23 mm	standard	standard	semi-shallow	6.92 mm	semi-wide	Bach 5G, shallower cup, Schilke 51B
51C4	25.23 mm	standard	standard	standard	6.92 mm	semi-wide	Bach 5G, slightly shallower cup
51	25.23 mm	standard	standard	standard	6.92 mm	semi-wide	Bach 5G
51D	25.24 mm	standard	standard	semi-deep	7.11 mm	semi-wide	Bach 5G, deeper cup
52	25.65 mm	standard	standard	standard	7.11 mm	semi-wide	Between Bach 5G & 3G

Small Shank—GP Series

Model No.	Inner Diameter	Contour	Thickness	Cup Depth	Throat	Backbore	Approximate Size Equivalent
45C2-12C-GP	24.26 mm	semi-round	standard	standard	5.85 mm	semi-narrow	Bach 12C
48-GP	25.25 mm	standard	standard	standard	6.62 mm	semi-wide	Bach 6 1/2 AL, Denis Wick 6BS

Large Shank

Model No.	Inner Diameter	Contour	Thickness	Cup Depth	Throat	Backbore	Approximate Size Equivalent
47L	24.98 mm	standard	standard	standard	5.85 mm	standard	Bach 6 3/4 C, Schilke 47
48L	25.25 mm	standard	standard	standard	6.62 mm	semi-narrow	Bach 6 1/2 AL, Denis Wick 6BL
48DL	25.25 mm	standard	standard	semi-deep	6.62 mm	semi-narrow	Bach 6 1/2 AL rim, deeper cup
51BL	25.23 mm	standard	standard	semi-shallow	6.92 mm	semi-wide	Bach 5G, shallower cup, schilke 51B
51C4L	25.23 mm	semi-flat	standard	standard	6.92 mm	semi-wide	Bach 5G, slightly shallower cup
51L	25.23 mm	standard	standard	standard	6.92 mm	semi-wide	Bach 5G
51DL	25.24 mm	standard	standard	semi-deep	7.11 mm	standard	Bach 5G, deeper cup
52L	25.65 mm	standard	standard	standard	7.11 mm	semi-wide	Between Bach 5G & 3G
53L	25.91 mm	standard	standard	standard	7.11 mm	semi-wide	Bach 3G, Denis Wick 4AL

Large Shank—GP Series

Model No.	Inner Diameter	Contour	Thickness	Cup Depth	Throat	Backbore	Approximate Size Equivalent
48L-GP	25.25 mm	standard	standard	standard	6.62 mm	semi-narrow	Bach 6 1/2 AL, Denis Wick 6BL

Bass Trombone

Model No.	Inner Diameter	Contour	Thickness	Cup Depth	Throat	Backbore	Approximate Size Equivalent
58	26.84 mm	standard	standard	standard	7.25 mm	semi-wide	Bach 2G
59	27.22 mm	standard	semi-thin	standard	7.25 mm	semi-wide	Bach 1 1/2 G, Denis Wick 2AL
60B	27.83 mm	standard	semi-thick	semi-shallow	6.92 mm	semi-wide	For German style bass trombones
60	28.25 mm	standard	thin	standard	8.10 mm	wide	Bach 1G, Schilke 60

Bass Trombone—GP Series

Model No.	Inner Diameter	Contour	Thickness	Cup Depth	Throat	Backbore	Approximate Size Equivalent
59-GP	27.22 mm	standard	standard	standard	7.25 mm	semi-wide	Bach 1 1/2 G, Denis Wick 2AL

Signature Series Mouthpieces

For years many of the greatest talents in the world have been coming to our R&D centers, where our design experts create the mouthpiece of their dreams. The Yamaha Signature Series includes models designed with:

- Alain Trudel (Trombone)
- Peter Sullivan (Trombone)
- Canadian Brass (Trombone)
- Douglas Yeo (Bass Trombone)

Alain Trudel (Trombone)



The Trudel mouthpiece offers players a big warm sound, and a rim and cup size well suited for orchestral as well as solo use. Its deep cup and special rim contour give the sound and feeling of a much bigger mouthpiece, while maintaining the secure, well-centered high range usually possible only with a smaller mouthpiece.

Model No.	Inner Diameter	Contour	Thickness	Cup Depth	Throat	Backbore
TRUDEL	25.23 mm	semi-round	semi-thick	deep	7.15 mm	narrow



Peter Sullivan (Trombone)



Sullivan's mouthpiece offers rich orchestral sound with a powerful tonal projection. The rim and cup are fairly large for comfortable fortissimo, yet the mouthpiece also offers fine control for the most delicate passages.

Model No.	Inner Diameter	Contour	Thickness	Cup Depth	Throat	Backbore
SULLIVAN	25.42 mm	standard	standard	semi-deep	7.15 mm	semi-wide



Canadian Brass (Trombone)



This mouthpiece is big enough for a large orchestral sound, yet plays flexibly enough, and with a quick enough response, for jazz. Gene considers it comfortable in any musical genre—the perfect 'all-around' mouthpiece.

Model No.	Inner Diameter	Contour	Thickness	Cup Depth	Throat	Backbore
CB SL	25.42 mm	standard	standard	standard	7.15 mm	semi-wide

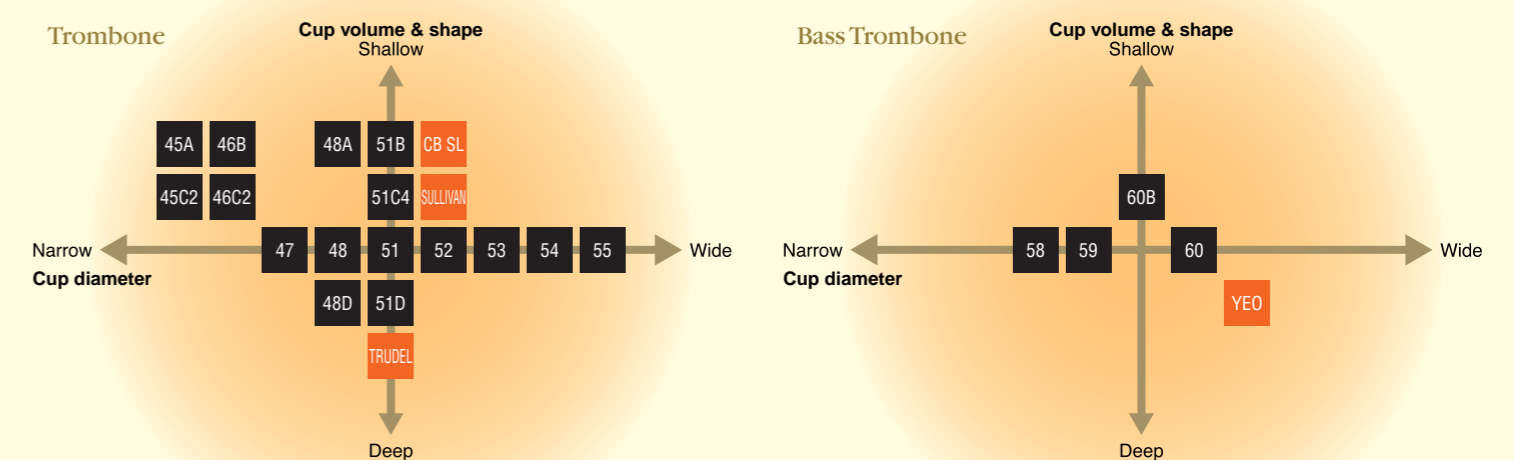


Douglas Yeo (Bass Trombone)



The Yeo mouthpiece features a large size cup for a big rich sound. It combines the best aspects of large, symphonic style mouthpieces with an ideal amount of outer mass and a carefully designed backbore and throat for improved high range and dynamic flexibility.

Model No.	Inner Diameter	Contour	Thickness	Cup Depth	Throat	Backbore
YEO	28.72 mm	semi-flat	semi-thin	semi-deep	8.0 mm	semi-wide



The Talent and Inspiration Behind our Trombones

Many of the greatest artists in the world have shared their talent, experience, and dreams with Yamaha designers. It is the combined talents of both artists and artisans which forms the heart and soul of our trombones.



Jay Ashby
Jazz soloist, member of the Dizzy Gillespie All Star Band and Paul Simon Band
"I love the horn, and am very excited about further developments. In recent years YAMAHA trombones have been consistently getting better and better. I can honestly say that I can't remember picking up a bad horn."



Robin Eubanks
Jazz soloist, member of the Dave Holland Quintet
"Yamaha trombones have become an integral part of my personal sound."



Rudolf Josel
Former solo trombone Vienna Philharmonic
"Yamaha has been successful in developing an excellent trombone in regards of technical qualities and the sound. And I am also very impressed by the very easy response and the superb intonation. That's why I play a Yamaha trombone."



Nils Landgren
Jazz soloist
"I play Yamaha because Yamaha plays me. It is an everlasting love affair."



Paul Schreckenberger
Former Solo trombone Bayreuth Wagner Festival, Professor at Heidelberg and Mannheim Conservatories
"In February 1996 I got the opportunity to try a Yamaha, and I switched on the spot. For the first time I had found a trombone that matched exactly my sound imagination."



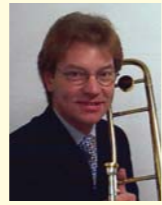
Carsten Svanberg
Soloist, Professor at Graz Music Academy
"I don't care which brand I am using, I just play the best instrument I can. That's why since 1980 I have used Yamaha tenor and alto trombones exclusively."



Steve Turre
Jazz soloist, member of Saturday Night Live Band
"Superior craftsmanship, even response from top to bottom, full round resonant tone and even intonation, What more can you ask for."



Richard Edwards
Jazz soloist, member of the London Brass
"The Xeno trombone has a superior tone in all registers and dynamics, with no resistance when using the F Valve, leaving more time to concentrate on the music."



Thomas Horch
Solo trombone of the Bavarian Radio Orchestra
"The new Xeno gives me complete possibilities to play in any dynamic range and in every register. The sound always stays big and noble-never too aggressive. And even when playing pianissimo the sound is still clear and brilliant and has a wonderful projection."



Alastair Kay
Classical and Jazz soloist, True North Brass
"For many years I wanted to play a trombone that had a great high range, superb response, effortless projection, and a beautiful sound. There was nothing available on the market that combined all of these qualities. That's why I helped Yamaha develop the YSL-697Z, a remarkable trombone that does it all!"



James Morrison
Jazz soloist and multi-instrument virtuoso
"My Yamaha trombone has a beautifully balanced slide, is very responsive to any nuance I put into it, and most of all - has a gorgeous, warm centred sound that makes it a joy to play."



Peter Sullivan
Principal trombone of the Pittsburgh Symphony Orchestra
"I always thought I needed more than one brand of instrument for the playing I do. But with the Xeno trombone, I've found a single instrument to take the place of my other horns. It has the warm yet brilliant sound that projects in every situation nothing else."



Alain Trudel
Classical and Jazz soloist
"I knew we got it when after my performances with orchestras the sections all wanted to try my new horn" A lot of hard work and care went into developing this great new horn, enjoy. Everybody listening to you will !



Douglas Yeo
Bass trombonist of the Boston Symphony and Boston Pops Orchestra
"With so many trombones available, people often ask me, 'Why do you play a Yamaha?' For me the answer is simple: I play Yamaha because Yamaha trombones work for me. No other trombone even comes close."

Play Whenever You Want, Wherever You Want!



PM5 Silent Mute (for trombone)



ST9



ST5



MC7

Silent Brass Systems SB5-9

The innovative Silent Brass System allows you to practice in your own private musical world. The secret of the system, is that you can listen to yourself playing at a normal volume - though others hear only a whisper. The SB5-9 set includes a PM5 mute and ST9 personal studio with earphones.

Personal Studio ST5

ST5 Digital Effect System for Wind Instruments

The ST5 offers incredible tonal variety for all wind instruments. powerful digital processors let you twist and shape your tone for unlimited creativity whether in silent practice, the recording studio, or during actual performance. It works equally well with the Silent Brass Pickup Mutes or a microphone.

Change Your Sound

A range of 32 high-resolution digital effects including reverbs, delays, distortion, pitch change, modulation, dynamics and 4-band EQ can be used—up to 6 at once—to alter and enhance your sound. 50 preset effect programs are provided, and memory for 50 user programs lets you store your own creations.

Improve Your Playing

The built-in tuner, metronome with rhythm patterns, and phrase sampler, make the ST5 a powerful practice tool. While inputs for external sources such as recordings allow real-time pitch-change so you can play along with any music.

Maintenance Materials

Yamaha offers a vast array of maintenance products. All have been carefully designed and tested to help you take the best possible care of your instrument.

